



DOI/NRDAR National Workshop

Daniel Brooks,
Tribal Forester

April 30, 2014

Latiw<tsya>nik&=lale> They Protect the Earth

WWW.ONEIDANATION.ORG/ENVIRONMENTAL



Outline

About Oneida

NRDA Resource

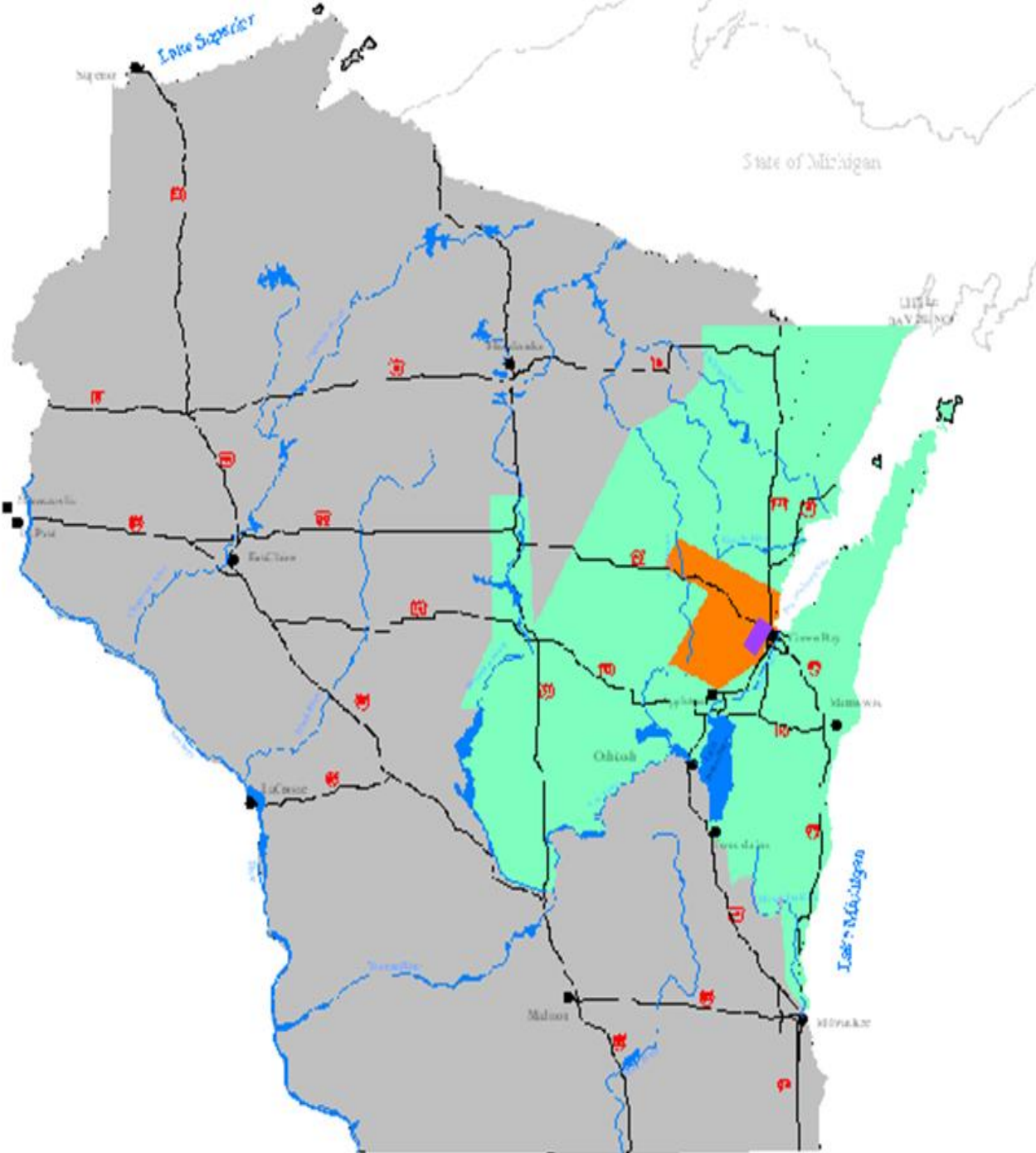
Management Goals

A Look at the Budget



Oneida, NY, USA

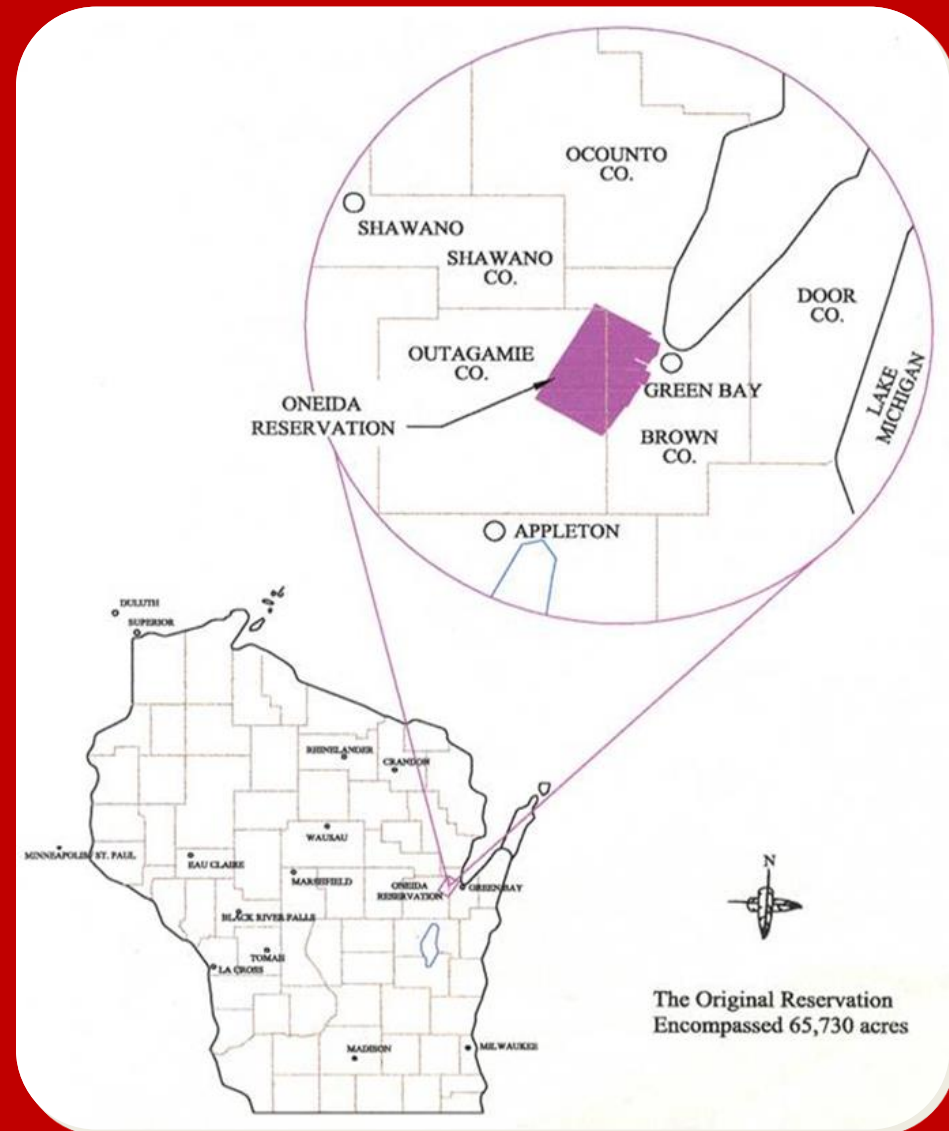
Movement to Wisconsin Territory

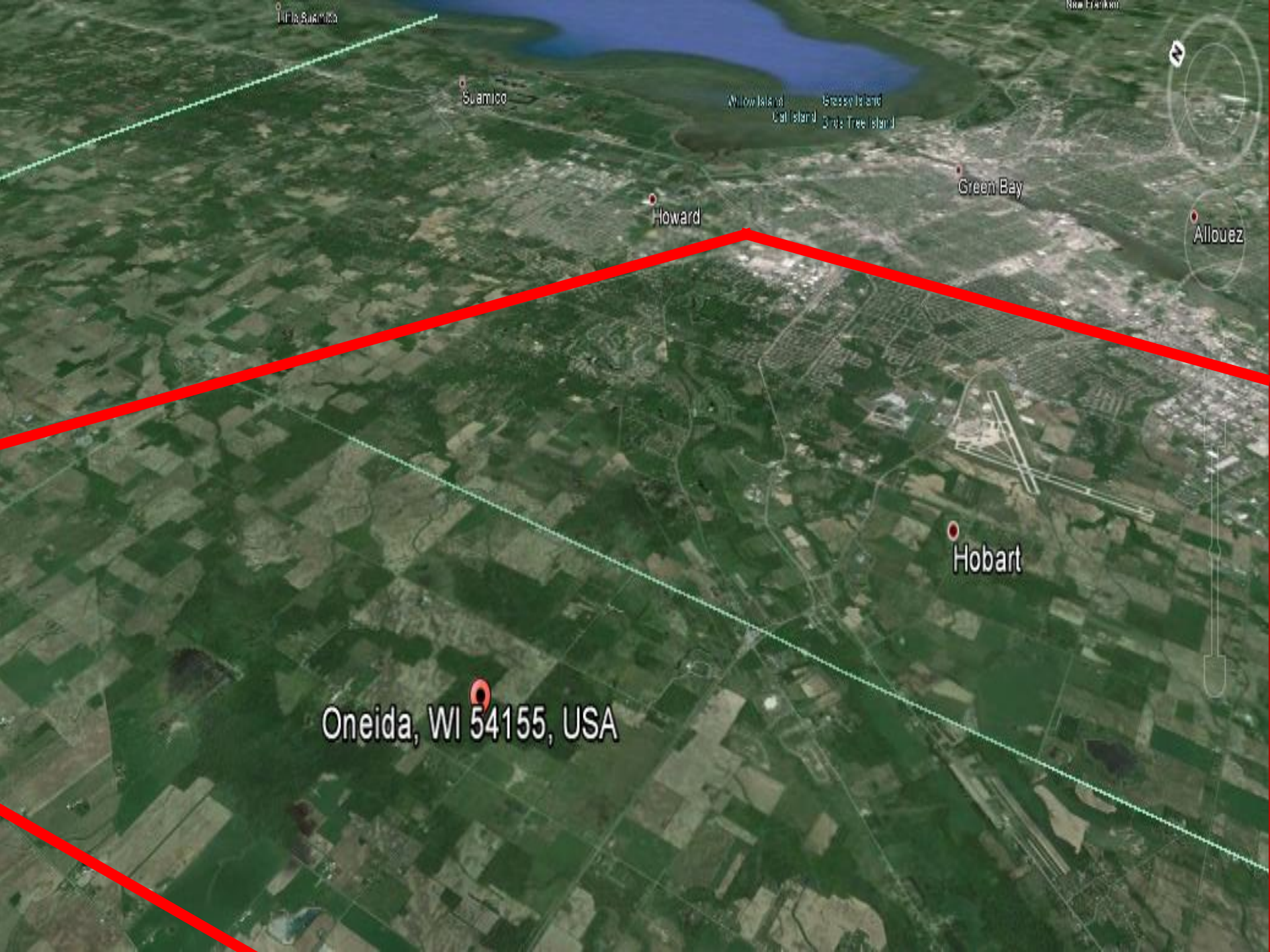


Changes to Oneida Reservation Over Time

- Menominee/Oneida Territory - 1822
Approximately 8 million acres
- Oneida Territory - 1831
Approximately 500 thousand acres
- Oneida Territory - 1838
Approximately 65 thousand acres

- Oneida Reservation is about 65,400 acres (approximately 100 square miles)
- Tribe currently owns 40% of the land base
- 16,000 members, over 7000 tribal members live on or near the Reservation (2010)
- Multi-jurisdictional issues- Counties, Cities, Villages, and Towns within the Reservation





Oneida, WI 54155, USA

Suamico

Howard

Green Bay

Hobart

Oneida, WI 54155, USA

Willow Island
Cat Island

Grassy Island
One Tree Island

Allouez

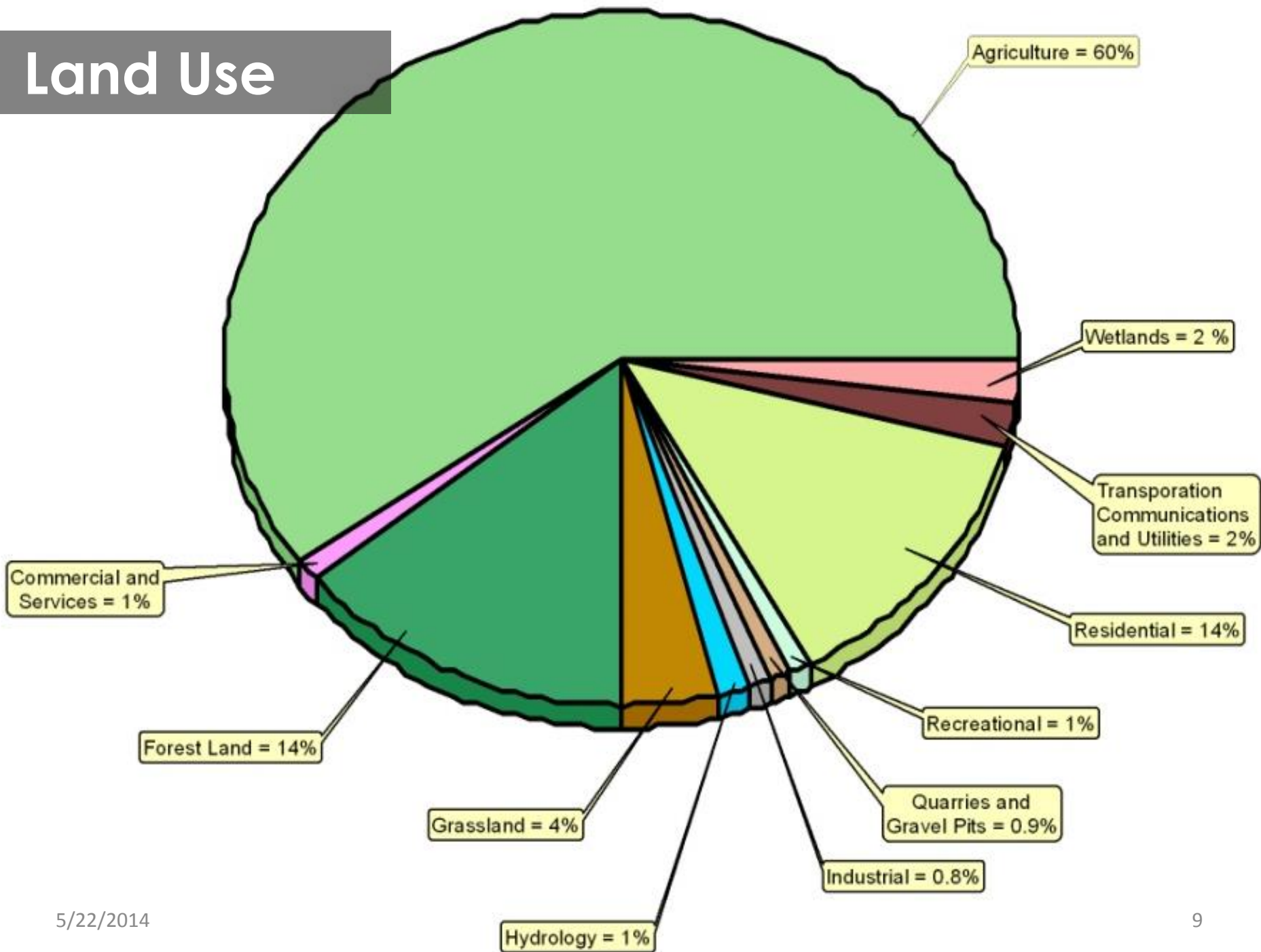
About Oneida

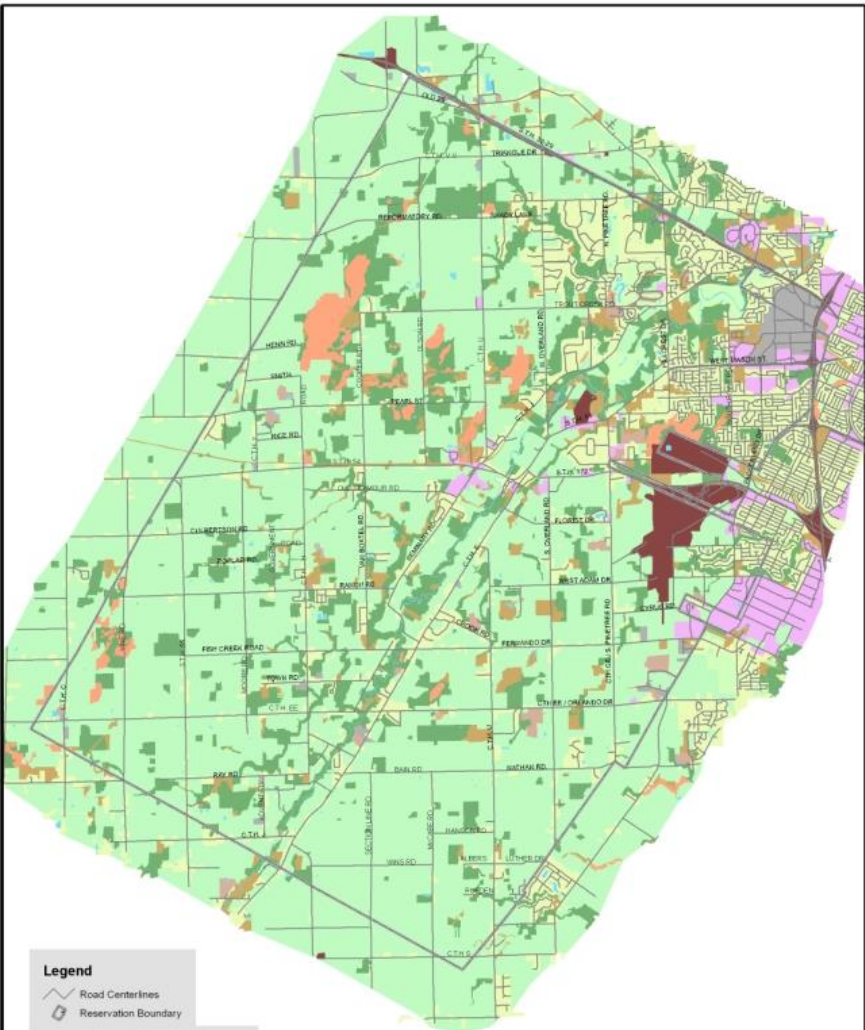
- 2,800 employees
- Approximately 40% land ownership
- Main Casino & Bingo, Mason Street Casino, and six “One-Stop” convenience stores.

About Oneida



Land Use





Legend
— Road Centerlines
- - - Reservation Boundary

- Land is Currently Being Used for:**
- Agriculture
 - Commercial and Services
 - Forest Land
 - Grassland
 - Hydrology
 - Industrial
 - Quarries and Gravel Pits
 - Recreational
 - Residential
 - Transportation Communications and Utilities
 - Wetlands

NOTE:
Map is a representation
What the land is being used for as determined
from the 2006 aerial photography interpretation.
It does not represent Zoning or Tribal Land that has been
through the LUTU process

Agriculture

Forests

Wetlands

Commercial/Services

Transportation/Communications/
Utilities

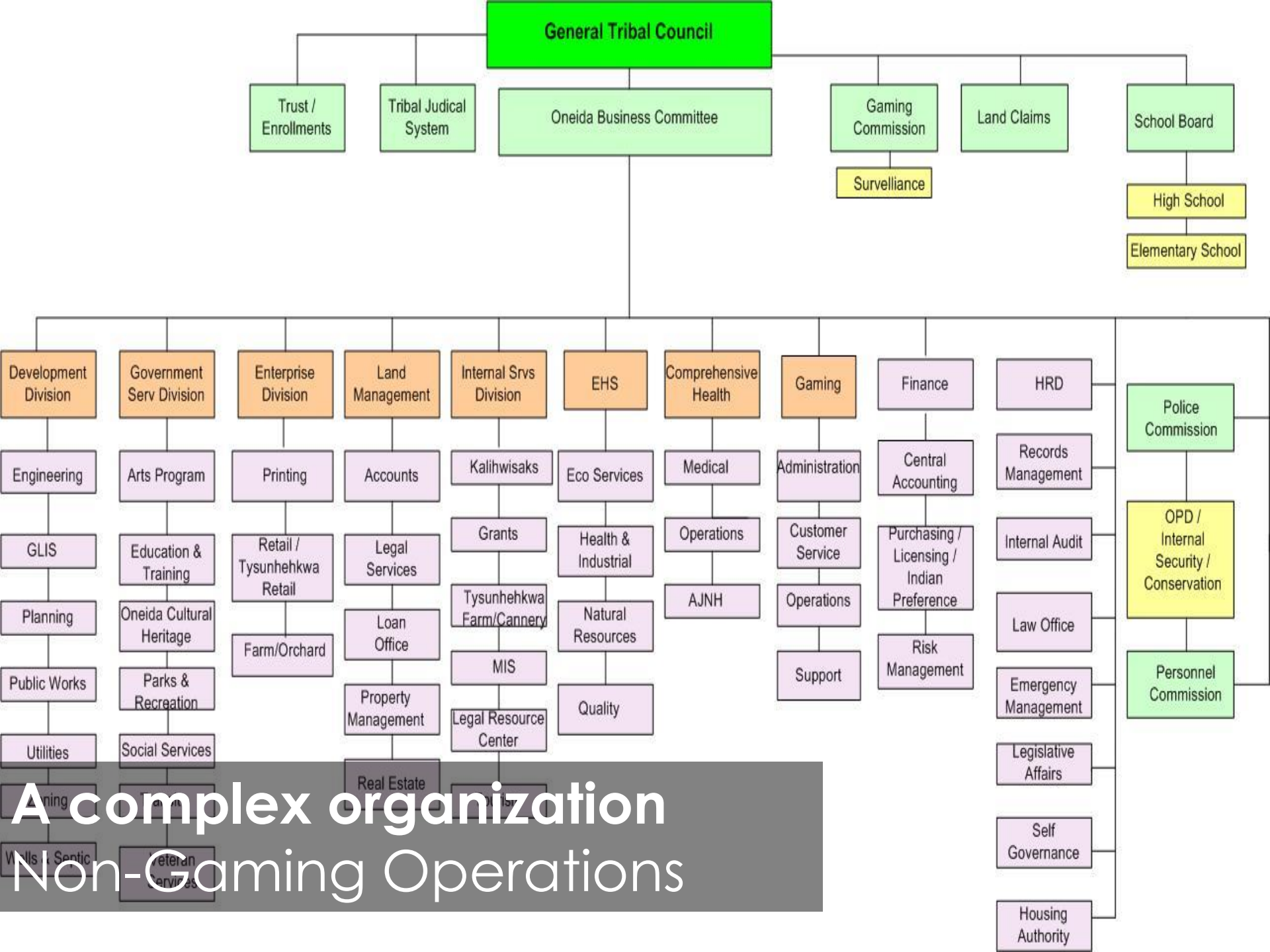


GEOGRAPHIC LAND INFORMATION SYSTEMS
N 705 Packerland Drive
Green Bay, Wisconsin
920-496-2987
File: 2006 Landuse.mxd Date: 3-18-09 Revised 07-31-09

1 inch = 7,000 feet



Source: Photography: April 24, 2006
Coordinate System: Wisconsin State Plane, Central Zone
Datum: Projection: U.S. Foot
Horizontal Datum: NAD83
Vertical Datum: NAV88



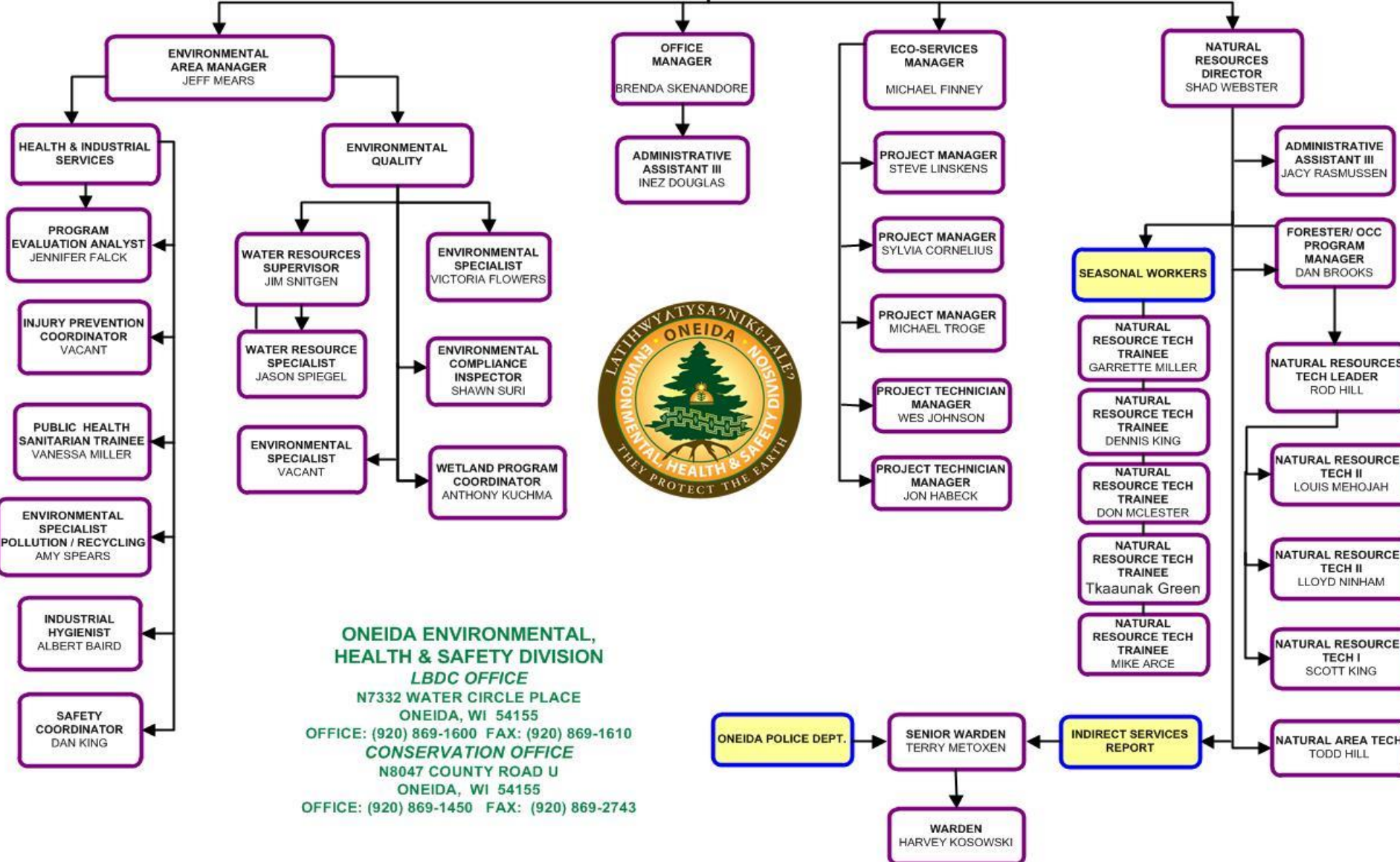
**A complex organization
Non-Gaming Operations**

ENVIRONMENTAL, HEALTH & SAFETY DIVISION

FY2014 Feb. 11, 2014

ENVIRONMENTAL, HEALTH & SAFETY DIVISION DIRECTOR
PATRICK J. PELKY

28 FTE's
4 Seasonal Staff



**ONEIDA ENVIRONMENTAL,
HEALTH & SAFETY DIVISION**
LBDC OFFICE
N7332 WATER CIRCLE PLACE
ONEIDA, WI 54155
OFFICE: (920) 869-1600 FAX: (920) 869-1610
CONSERVATION OFFICE
N8047 COUNTY ROAD U
ONEIDA, WI 54155
OFFICE: (920) 869-1450 FAX: (920) 869-2743



Oneida Natural Resources

295 miles of rivers, creeks, & streams

7,015 acres of wetlands

249 acres of lakes and ponds

12,800 acres forested

NRDA Resource Management Goals

Goal 1: Enhance Fishery Resources

Goal 2: Preserve & Restore Wetlands & Associated Upland Habitat

Goal 3: Improve Aquatic, Nearshore, and Riparian Habitat

Goal 4: Develop Co-Trustee Partnership Projects

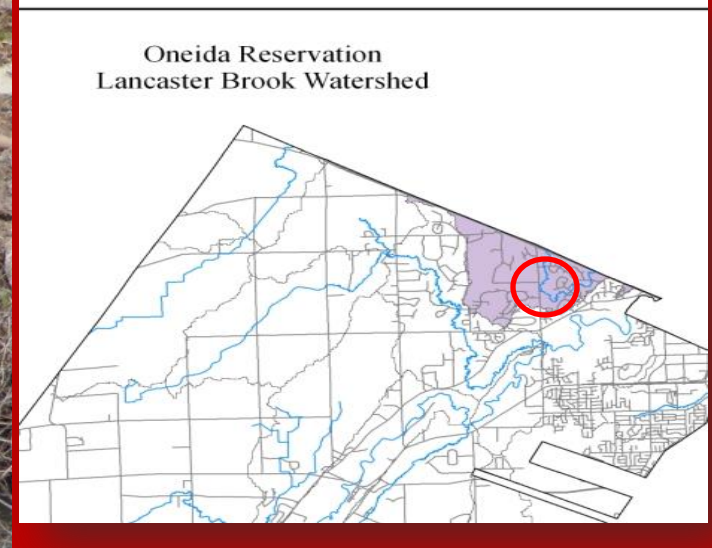




**Goal 1
Enhance
Fishery
Resources**



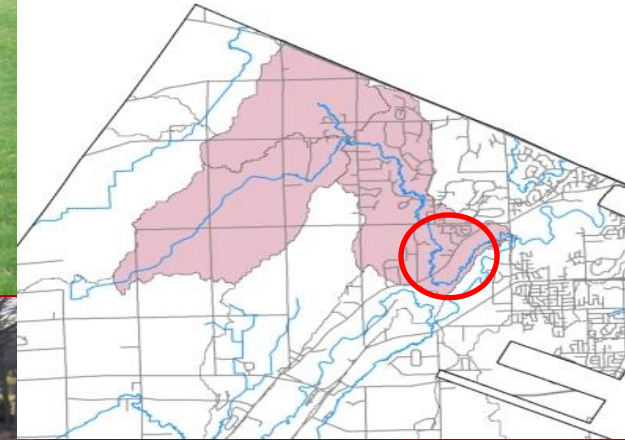
Project 1: Lancaster Brook



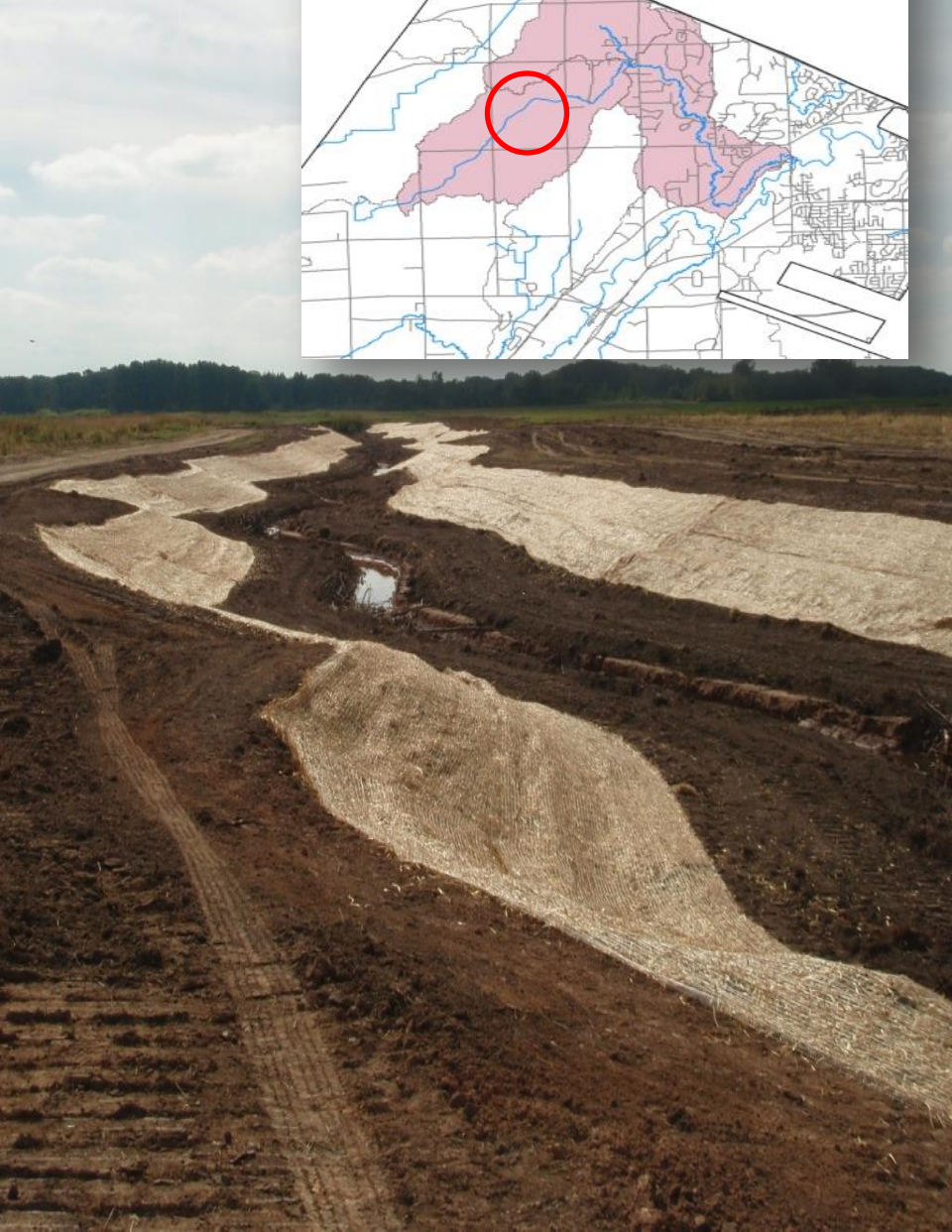
Project 2: Brown County Golf Course Stream Reroute



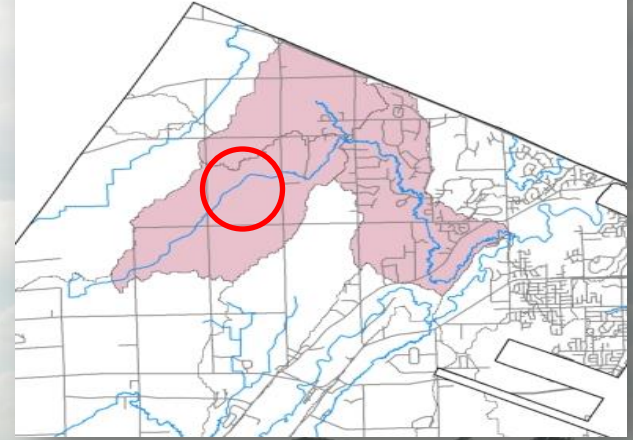
Oneida Reservation
Trout Creek Watershed



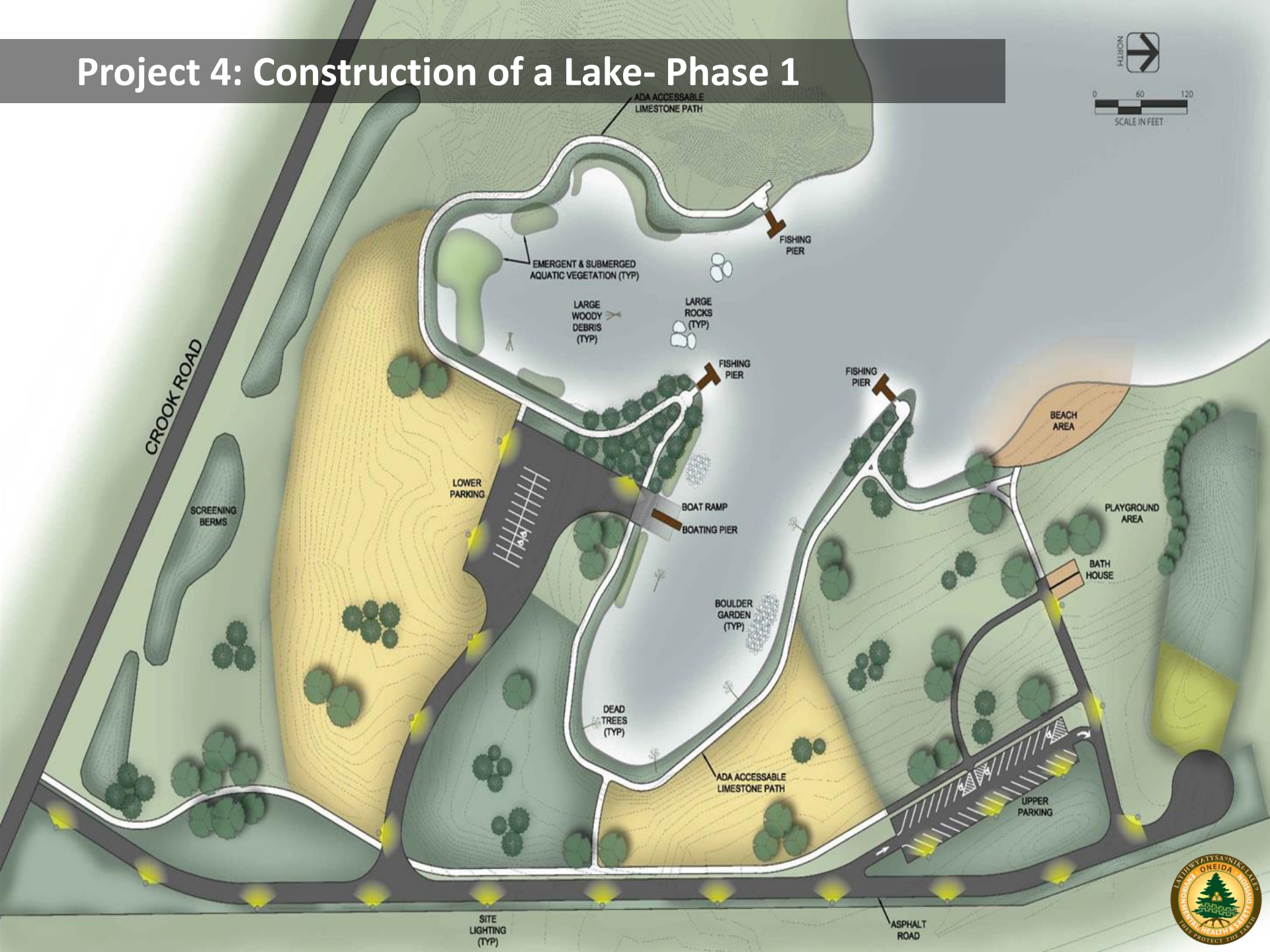
Project 3: Trout Creek Tributary



Oneida Reservation
Trout Creek Watershed



Project 4: Construction of a Lake- Phase 1



CROOK ROAD

SCREENING BERMS

LOWER PARKING

ADA ACCESSIBLE LIMESTONE PATH

EMERGENT & SUBMERGED AQUATIC VEGETATION (TYP)

LARGE WOODY DEBRIS (TYP)

LARGE ROCKS (TYP)

FISHING PIER

FISHING PIER

FISHING PIER

BEACH AREA

PLAYGROUND AREA

BATH HOUSE

BOULDER GARDEN (TYP)

DEAD TREES (TYP)

ADA ACCESSIBLE LIMESTONE PATH

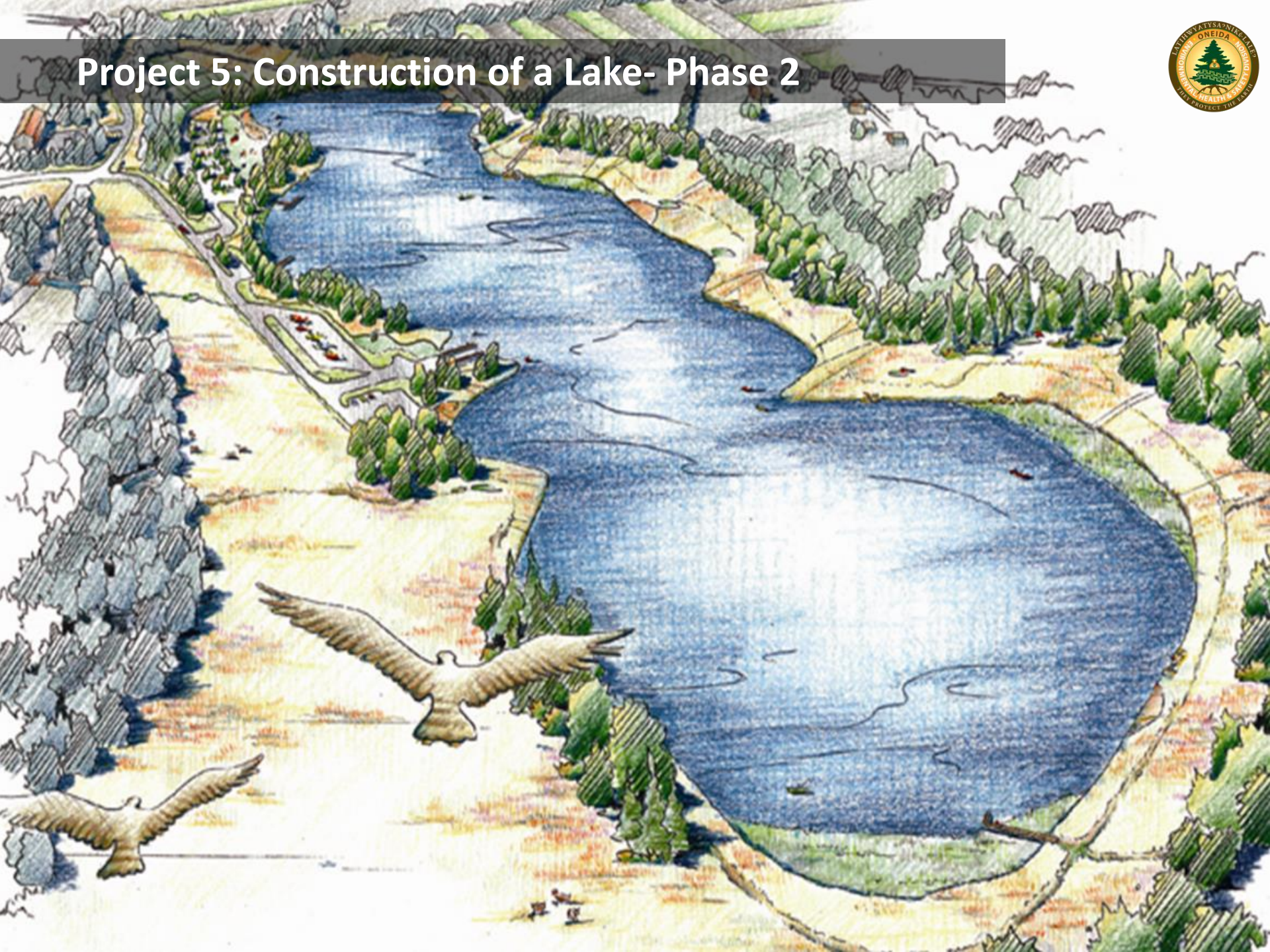
UPPER PARKING

SITE LIGHTING (TYP)

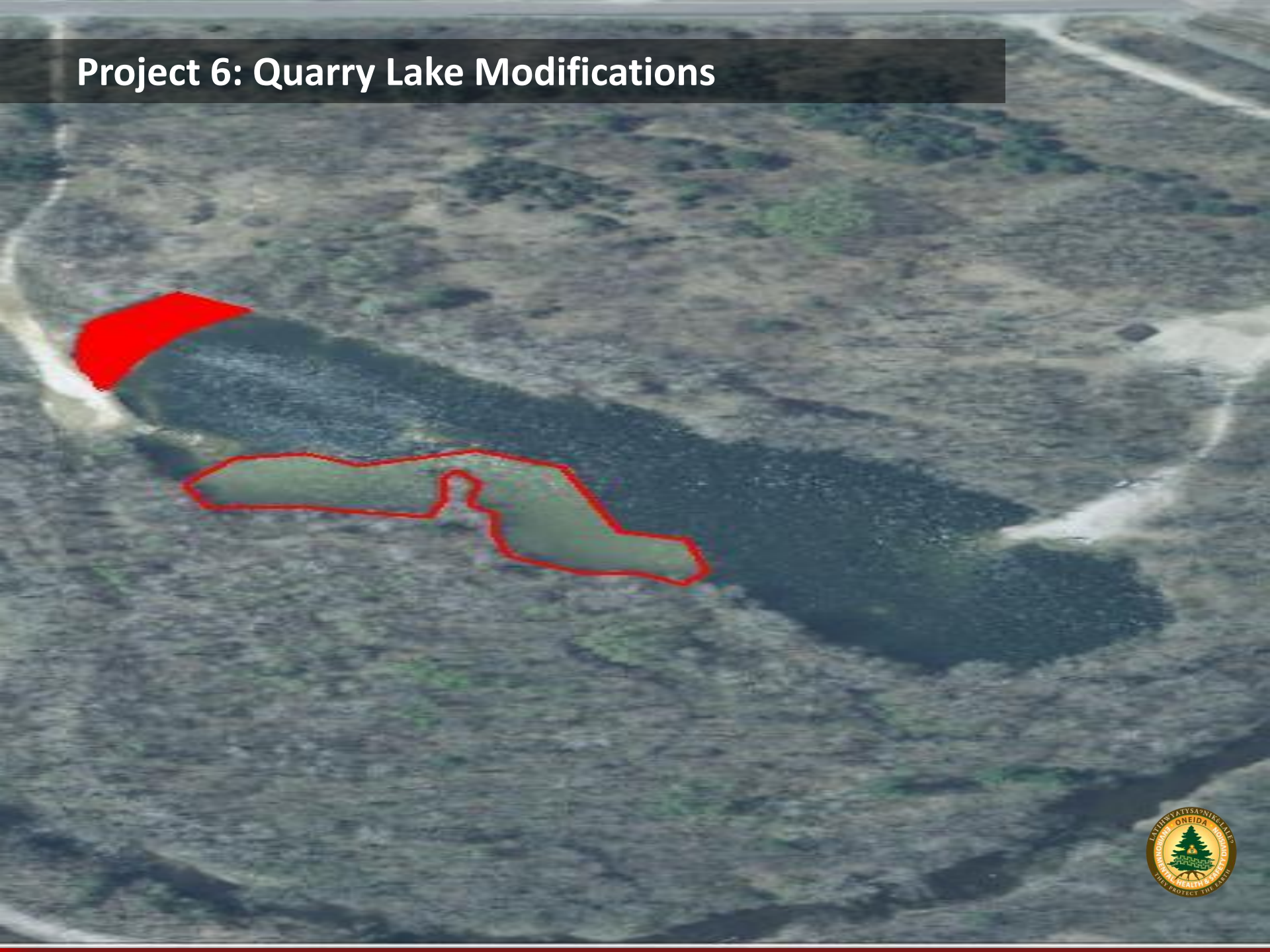
ASPHALT ROAD



Project 5: Construction of a Lake- Phase 2

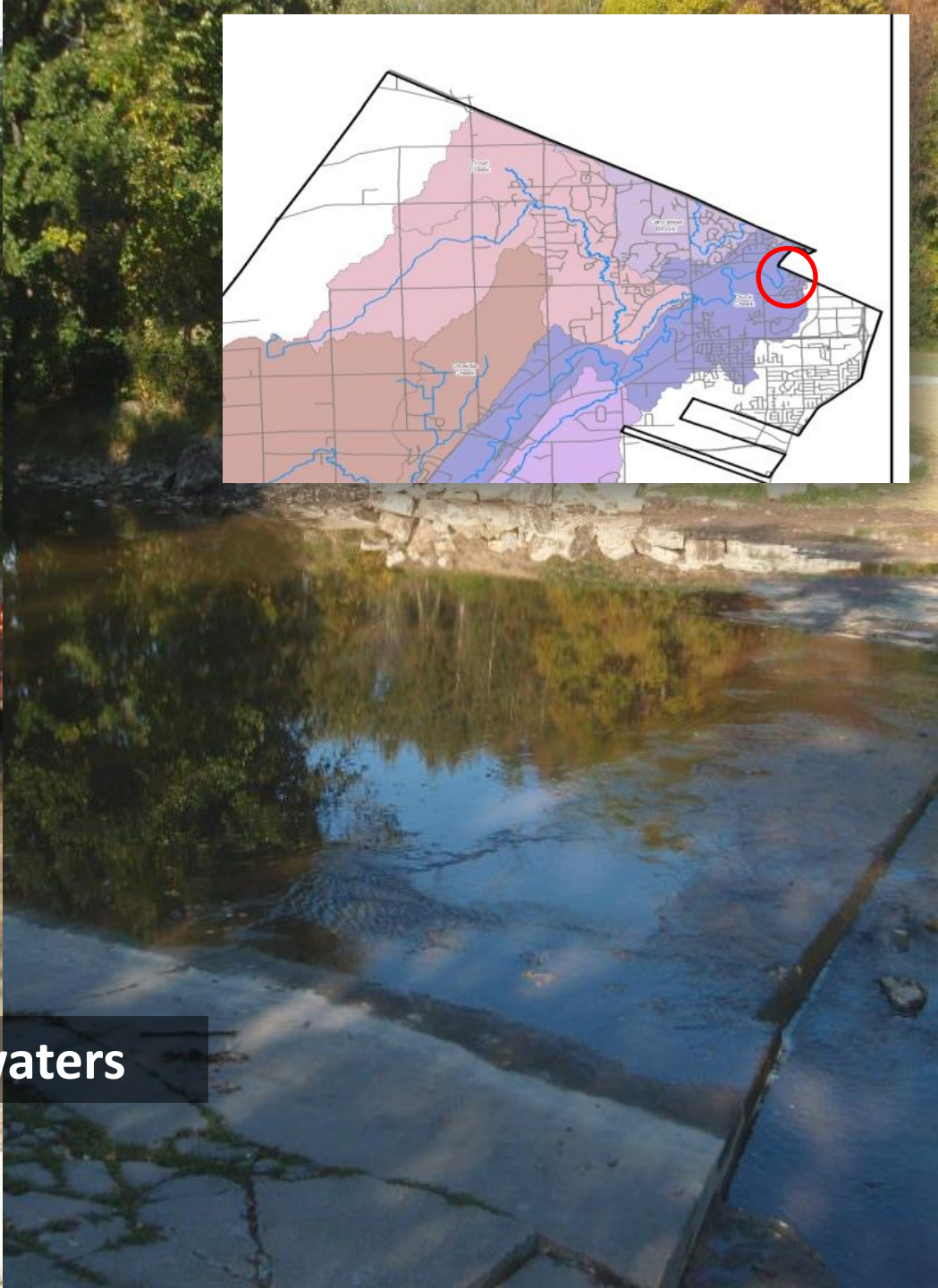
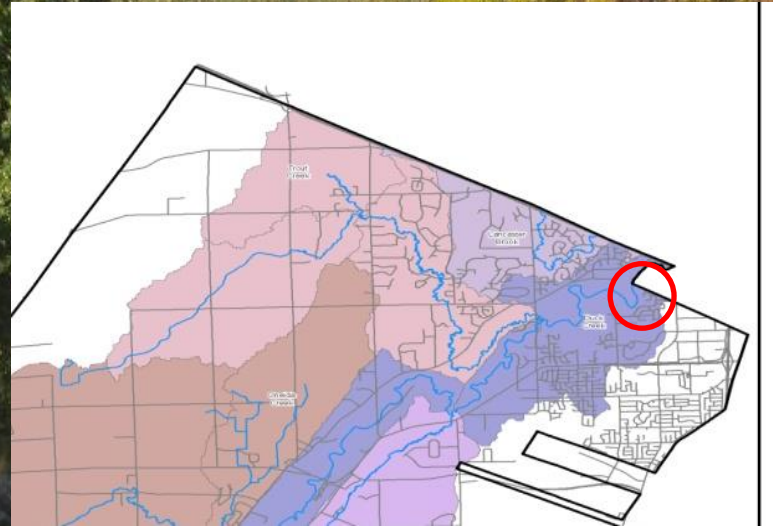


Project 6: Quarry Lake Modifications





Project 7: Oneida Fish Hatchery



Project 8: Duck Creek Headwaters



Future Fishery Enhancement Projects



Lake Site Stocking (Initial)

- 1750 lbs of Emerald Shiner
- 1750 lbs of Fathead Minnows
- 12,000 fingerling Bluegill
- 5,000 fingerling Black Crappie
- 3,000 Large/Smallmouth bass fingerlings
- 1,200 extended growth Walleye fingerlings
- 400 extended growth Tiger Musky fingerlings

Stocking (Continuing)

- 600 extended growth Walleye fingerlings
- 20-40 extended growth Tiger Musky fingerlings
- Brook Trout
- Fathead minnows





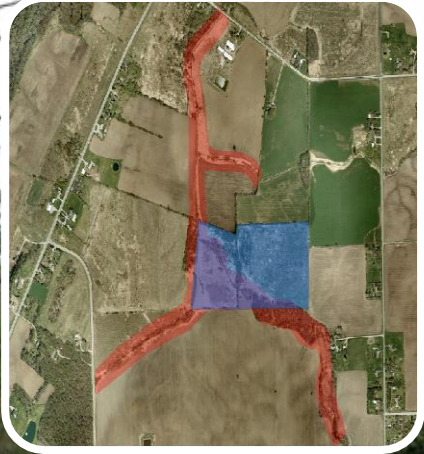
Goal 2: Preserve & Restore Wetlands

Oneida Tribe would like to submit for land purchases matching funds in amount of \$ to protect and preserve unique lands

- We would request \$ from NRDA and we would match those \$ with tribal and other grant funds. We would look at opportunities as listed below:
 - Headwaters of sub-watersheds: these would be a the greatest ecological benefits
 - Properties next to our proposed lake(s) or adjacent water bodies such as river, streams, ponds and wetlands
 - Larger tract lands with great value to watershed.



**Goal 3:
Improve
Aquatic,
Nearshore,
and Riparian
Habitat**



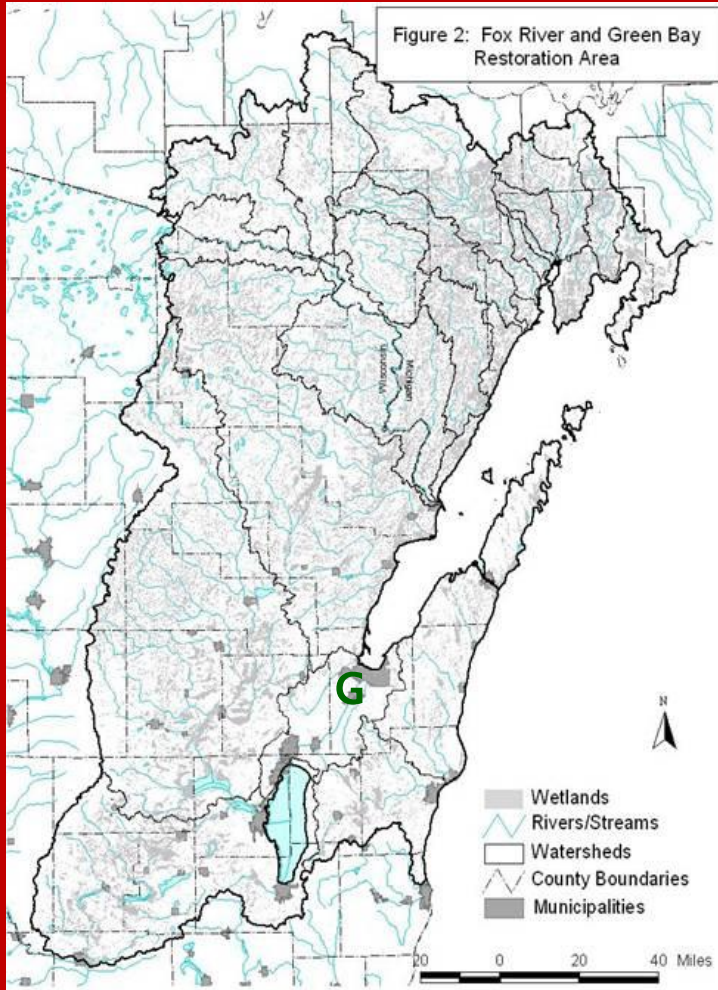
Project 8: Silver Creek Restoration



**Goal 4: Develop
Co-Trustee
Partnership Projects**

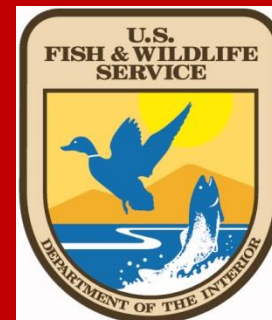
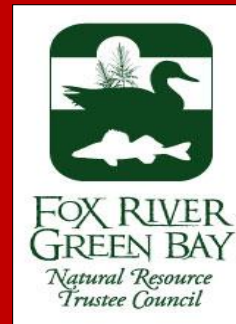
Duck Creek Headwaters projects address low-flow problems and 16-18 day of flash flooding episodes





Trustees:

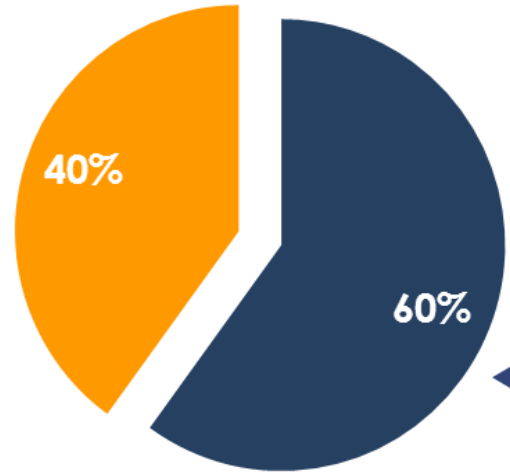
- Oneida Tribe
- Menominee Nation
- Federal Agencies (F&WS for DOI & NOAA)
- State of Wisconsin
- State of Michigan (dropped out 2009)



EHSD Grants vs. Tribal Contribution for FY14 Quarter 2



- FY13 External Funding
- FY13 Tribal Contribution



Tribal contribution is primarily made up of casino revenue.

External Funding Breakdown

The Bureau of Indian Affairs funds wildlife habitat and aquatic restoration projects.

The Environmental Protection Agency provides funds to protect human health and the environment by supporting implementation of federal environmental laws.

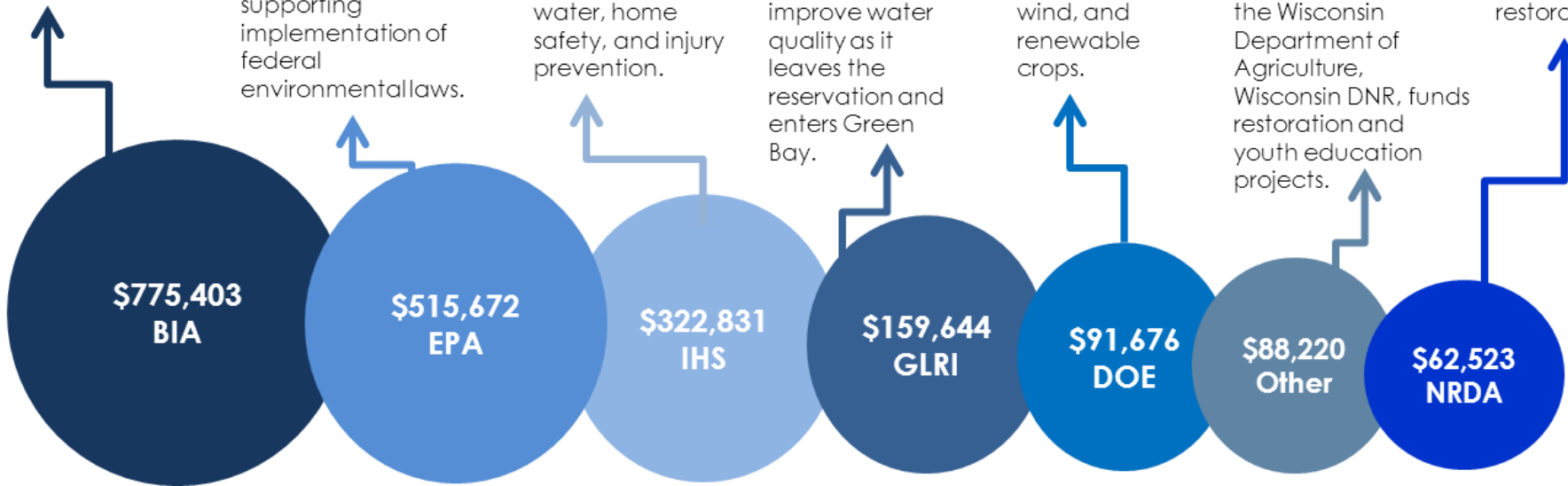
Indian Health Service funds environmental health activities related to food safety, drinking water, home safety, and injury prevention.

The Great Lakes Restoration Initiative includes activities and restoration projects to improve water quality as it leaves the reservation and enters Green Bay.

The Department of Energy funds alternative energy projects including solar, wind, and renewable crops.

This category includes the First Nations Development Institute, The Nature Conservancy, and the Wisconsin Department of Agriculture, Wisconsin DNR, funds restoration and youth education projects.

The Natural Resource Damage Assessment Fund is used for habitat restoration



Contact Us



Daniel Brooks, Tribal Forester

Phone: 920-869-6501

Email: dbrooks@oneidanation.org

web site: www.oneidanation.org/environment

EHSD Main Office

N7332 Water Circle Place

PO Box 365

Oneida, WI 54155

Conservation Office

PO Box 365

N8047 County Rd. U

Oneida, WI 54155

The Facebook logo, consisting of the word "facebook" in a blue, lowercase, sans-serif font, with a registered trademark symbol (®) to the right.

Like Us on
Facebook!