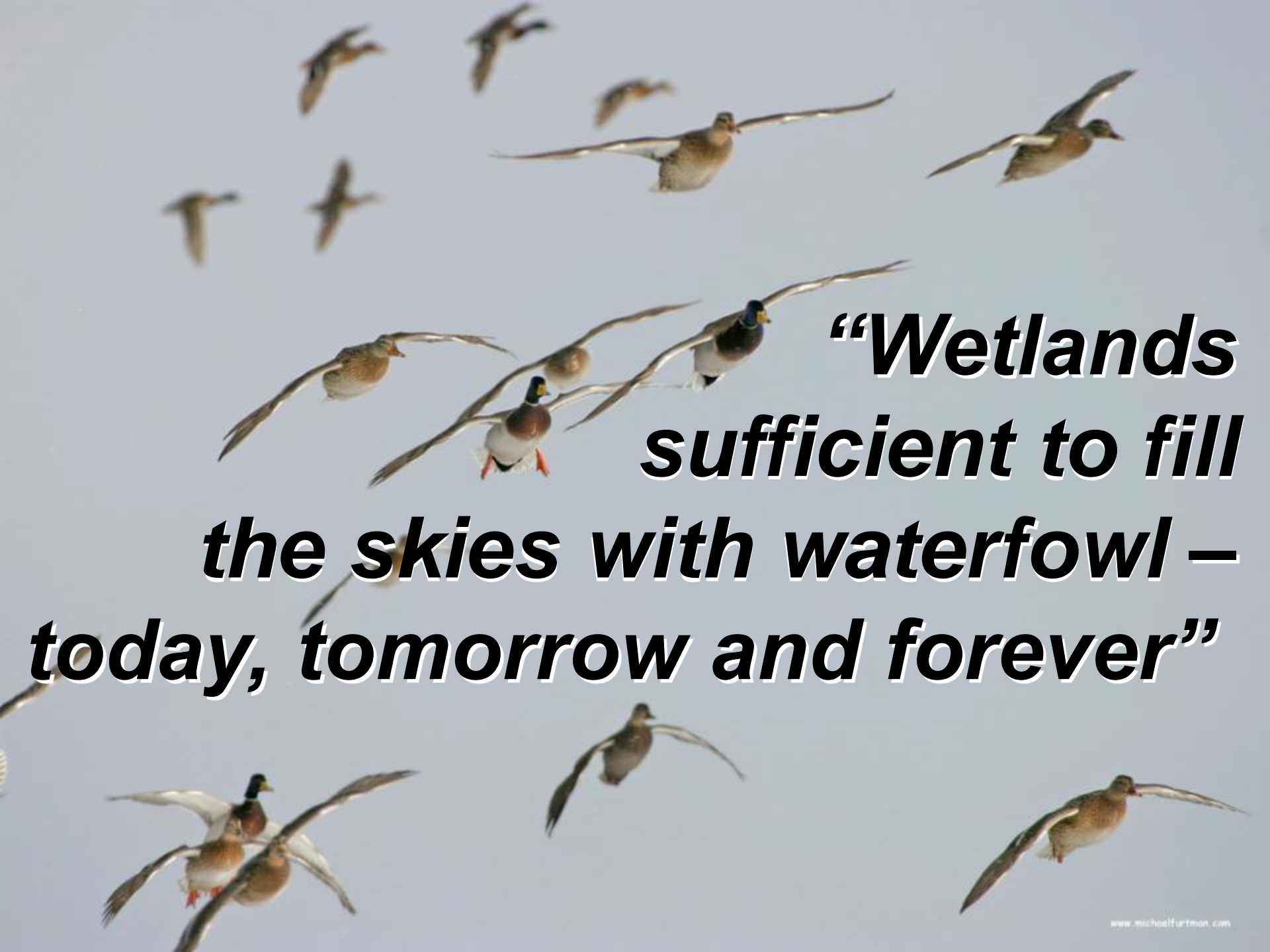


Conservation Partnering Across the Landscape



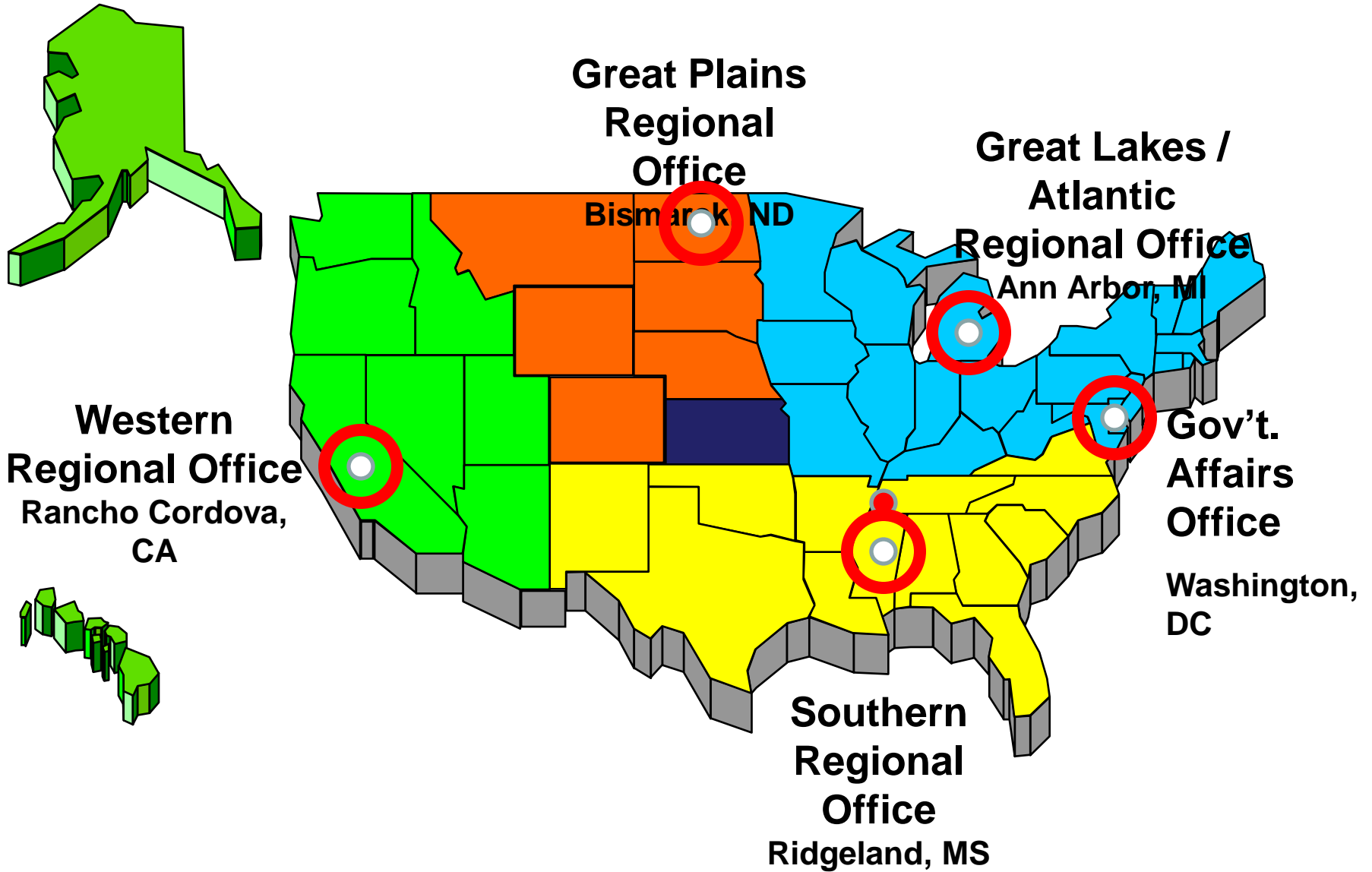
Lisa Irby
Director of Operations
NHQ Conservation





***“Wetlands
sufficient to fill
the skies with waterfowl –
today, tomorrow and forever”***

DU Conservation Regional Offices





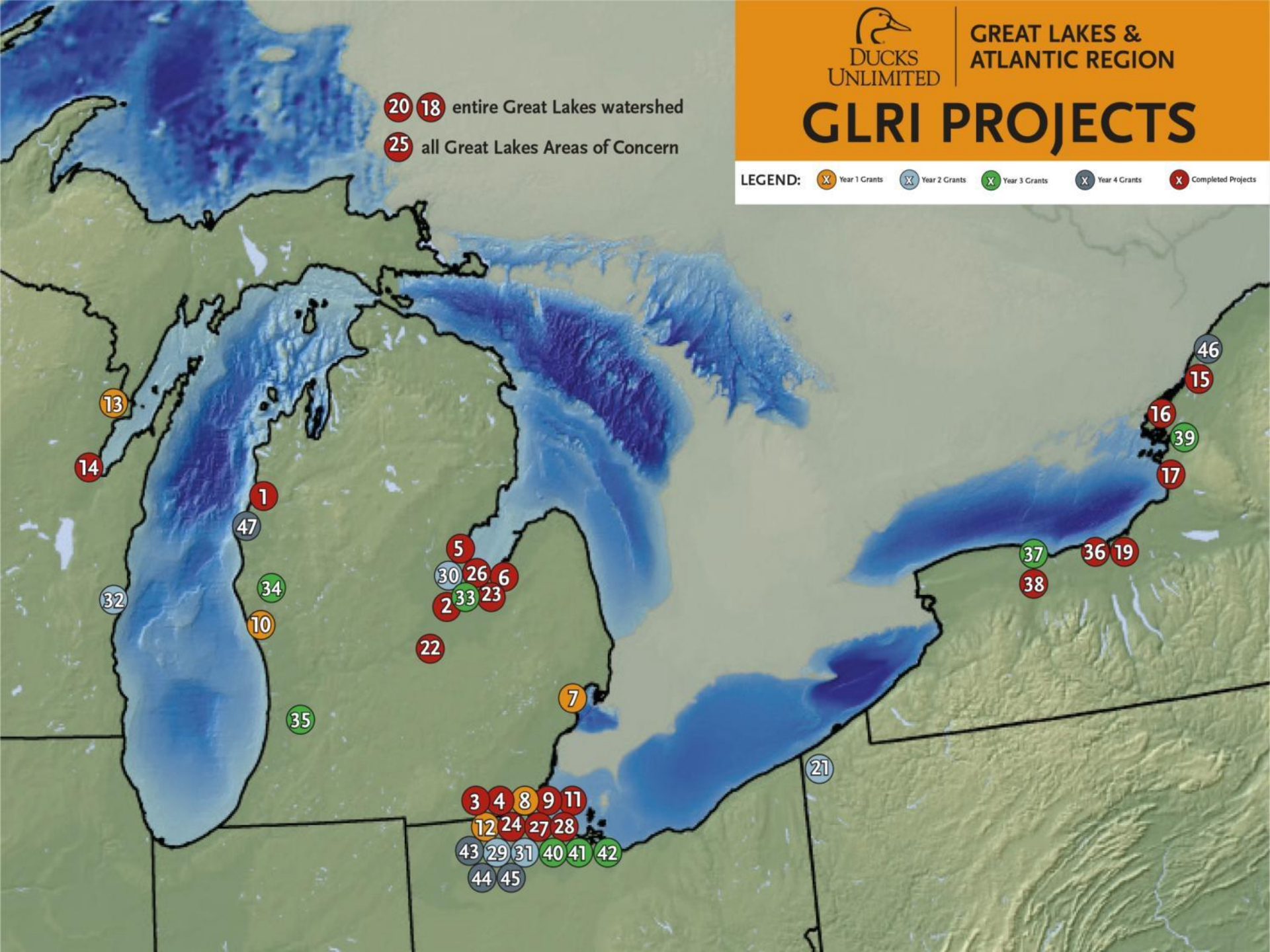


GREAT LAKES &
ATLANTIC REGION

GLRI PROJECTS

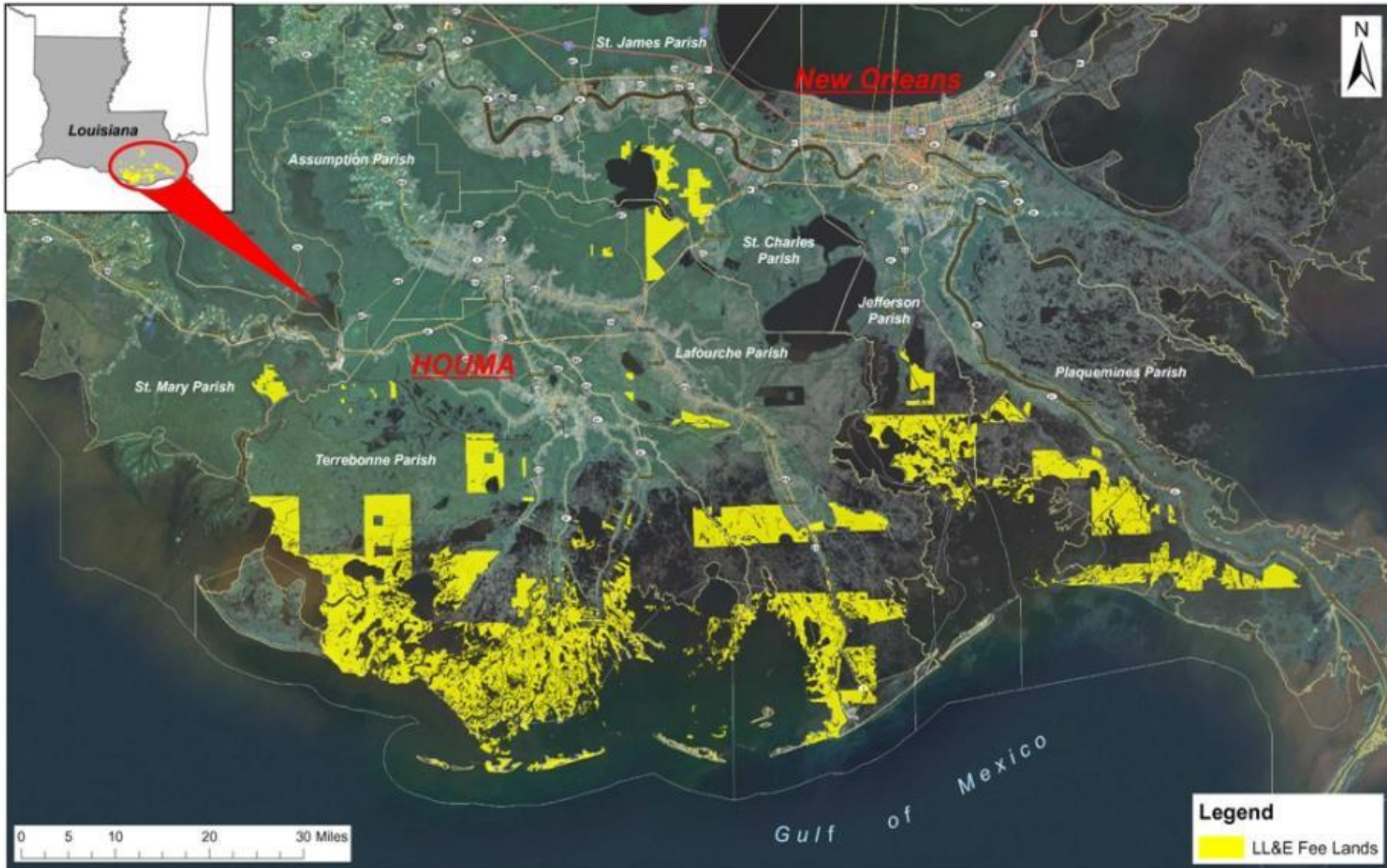
LEGEND: Year 1 Grants Year 2 Grants Year 3 Grants Year 4 Grants Completed Projects

entire Great Lakes watershed
 all Great Lakes Areas of Concern



ConocoPhillips

- Owns over 640K acres in coastal Louisiana
- Largest landowner along the imperiled coast
- Lots of restoration/enhancement opportunity



U.S. Drought Monitor California

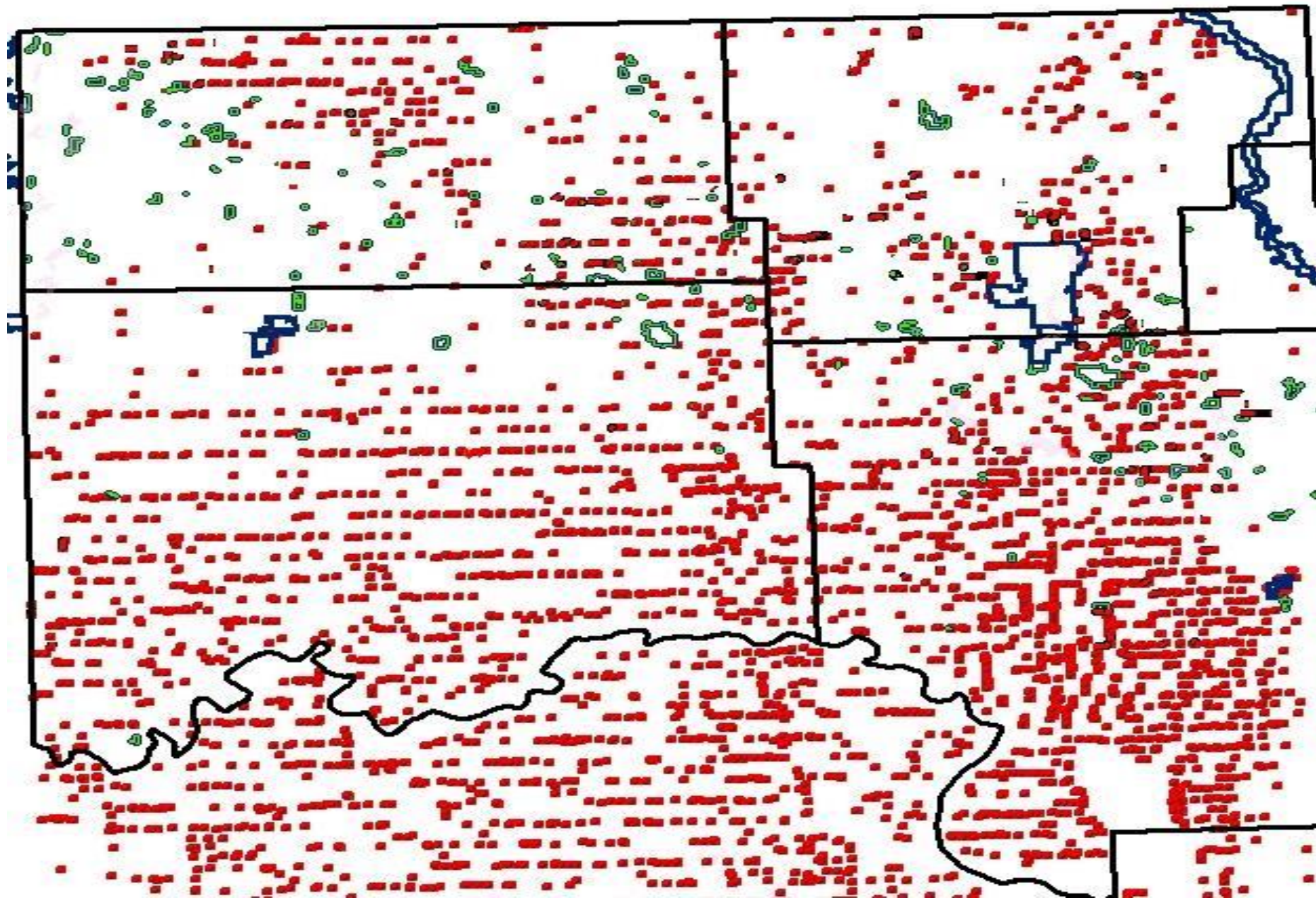
March 25, 2014
(Released Thursday, Mar. 27, 2014)
Valid 8 a.m. EDT

Drought Conditions (Percent Area)

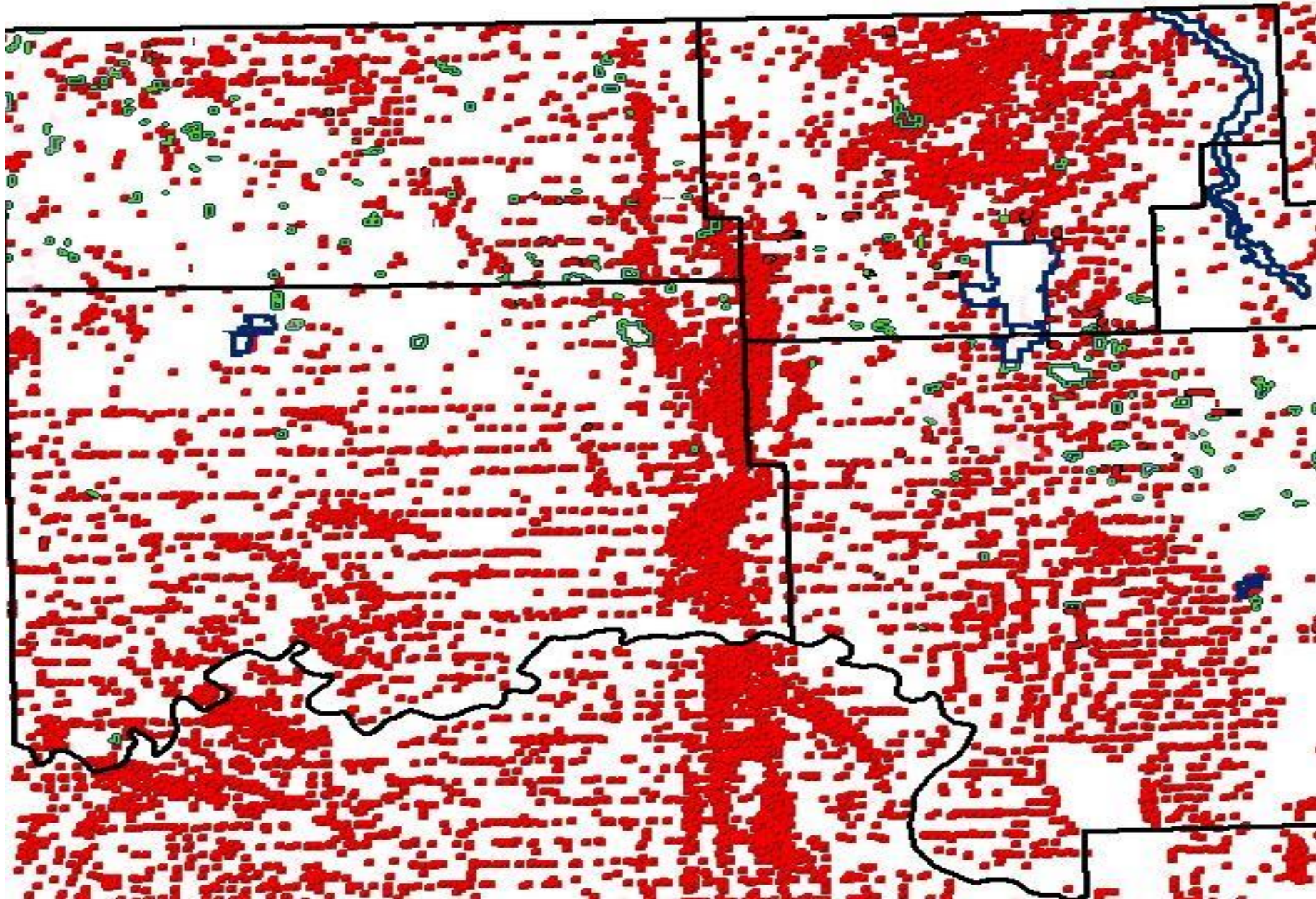
	None	D0-D4	D1-D4	D2-D4	D3-D4	D4
Current	0.00	100.00	00.00	05.21	71.78	22.42



NW North Dakota Oil Wells - 2005



NW North Dakota Oil Wells - Present





Wetland Mitigation




- In-Lieu-Fee (ND, SD, VT, NY)
- Banks (TN, ND, others)
- Permittee Responsible Mitigation



Stewarding the Landscape

A carbon story: Avoided Conversion of Grasslands and Shrublands



Lisa Irby
Director of Operations
NHQ Conservation



Prairie Pothole Region



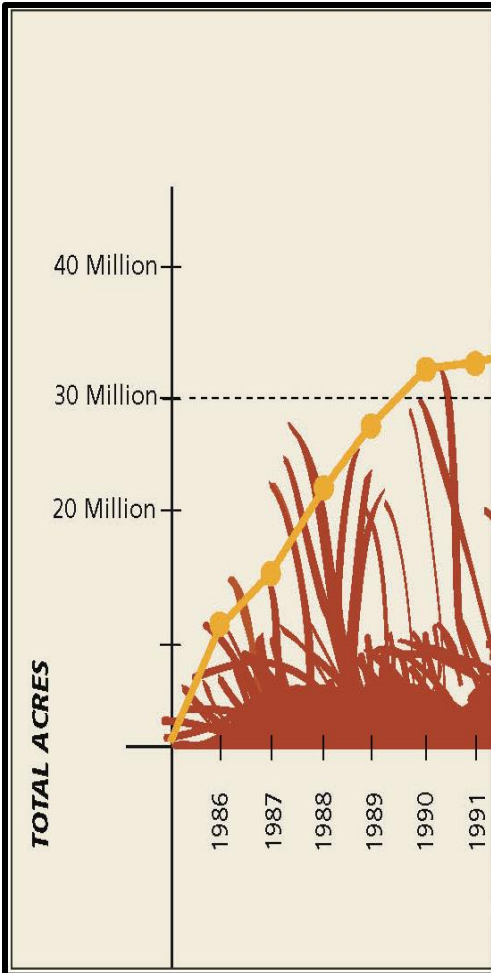
- Result of glaciers advancing and retreating across the land
- Original density of small wetlands across the region was up to 83 per square mile
- Nicknamed 'The Duck Factory of North America'



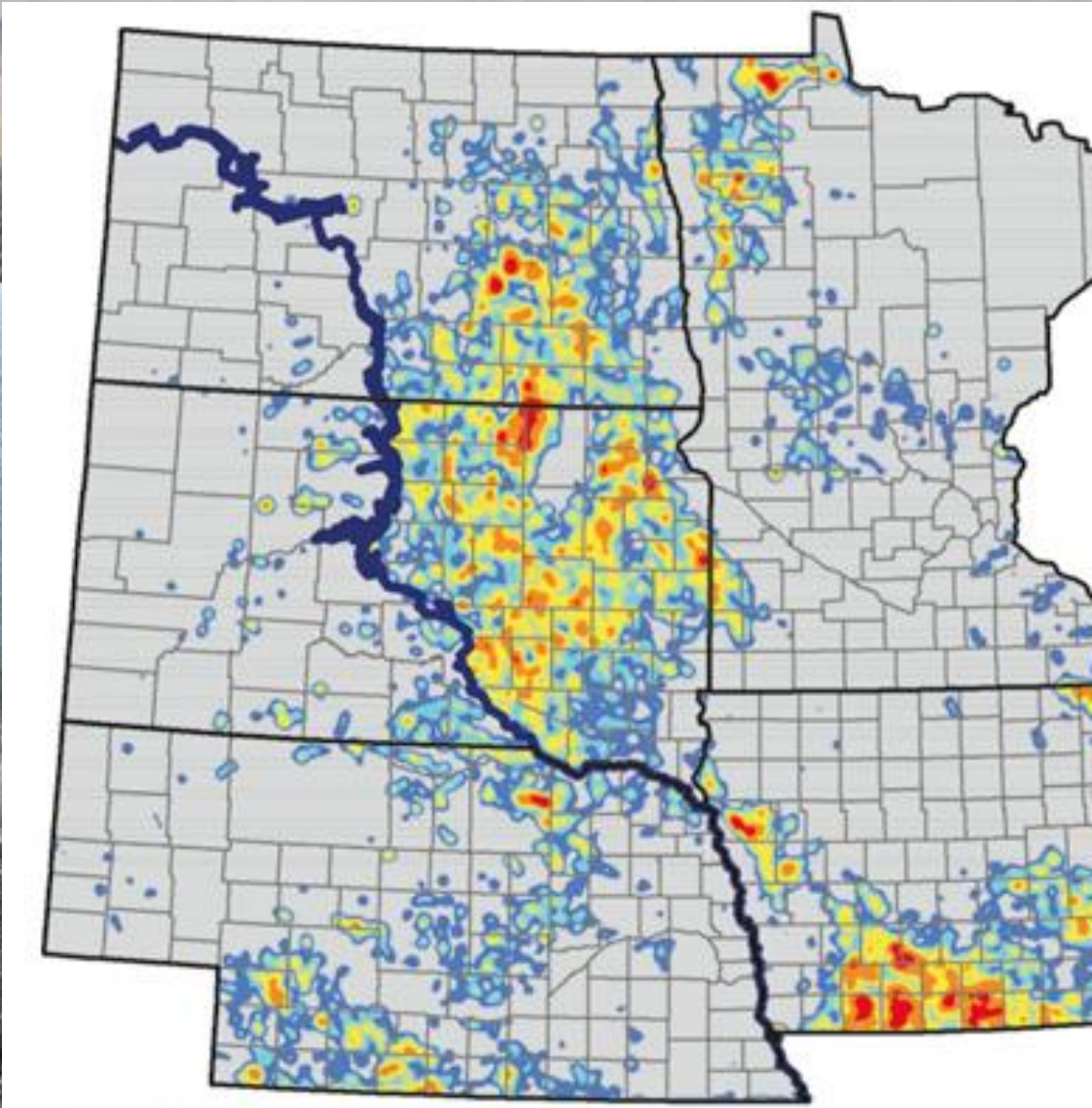
Ongoing Grassland Conversion

- Millions of acres lost
- Ongoing issue
- High commodity prices
- Challenging grazing economics and demographics





Grassland Conversion Hotspots



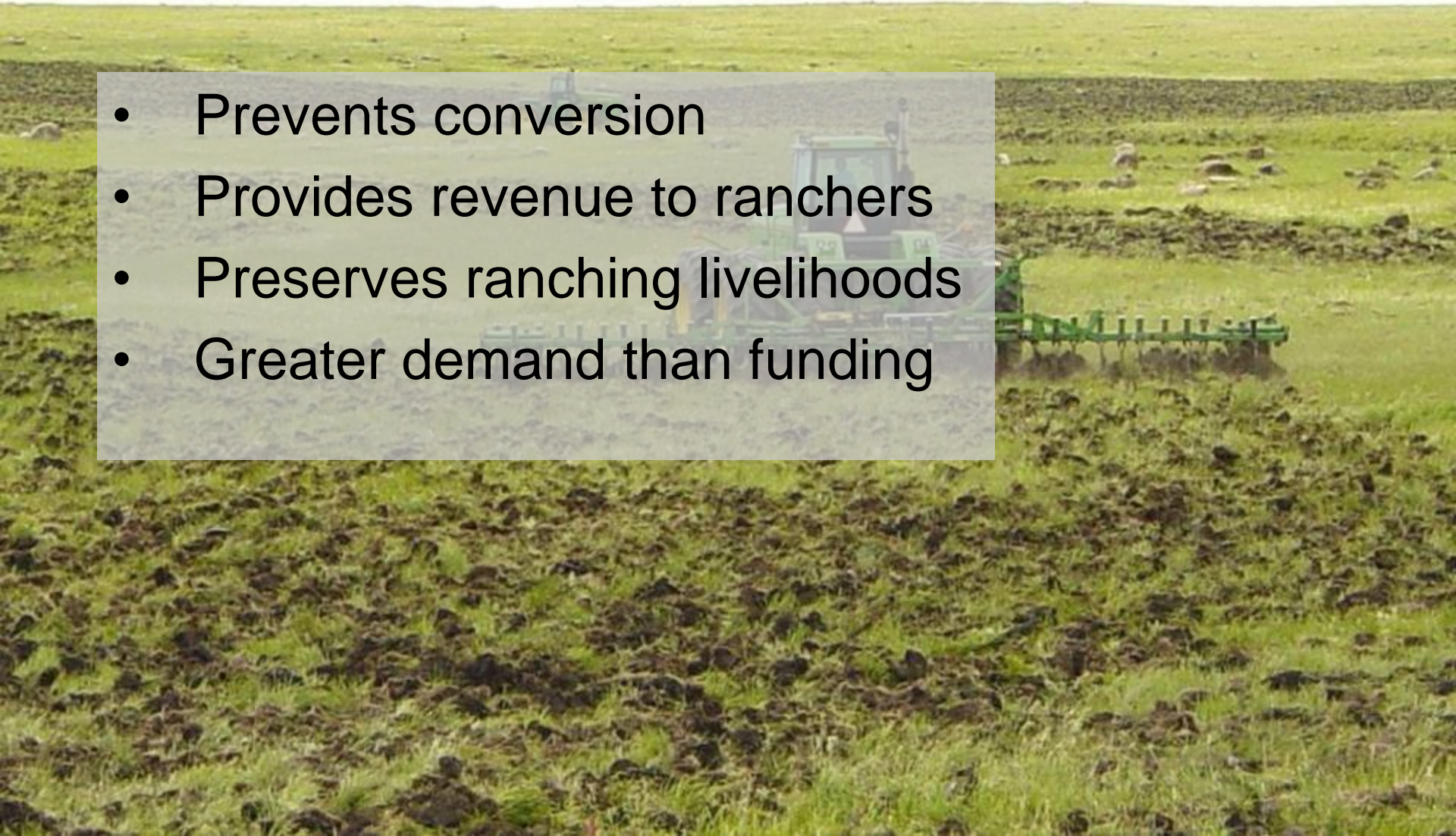
Conservation values at risk from conversion

- Greenhouse Gas Releases
- Clean water implications
- Natural flood controls
- Habitat loss



Perpetual Easements

- Prevents conversion
- Provides revenue to ranchers
- Preserves ranching livelihoods
- Greater demand than funding



New Funding Source



Carbon offsets!

Carbon Offset Certification

- New methodology approved through American Carbon Registry
- Avoided Conversion of Grasslands and Shrublands
- Allows sale of carbon offsets on voluntary carbon market

Carbon Benefits

- Conversion to cropland releases 40% of soil carbon in top 30 cm
- Prairie roots store carbon
- Fertilization of cropland releases N₂O
- Grassland easements permanently avoids all these emissions

Insight into the Methodology

A green tractor with a tillage implement is working in a field. The tractor is moving from left to right, turning over dark soil. The field is green with some rocks. A semi-transparent text box is overlaid on the image, containing three bullet points. The background is a bright, overcast sky.

- Targets lands at greatest risk of conversion
- Accounts for 'leakage'
- Models carbon emissions

Benefits Beyond Carbon

- Ranching Livelihoods
- Soil conservation
- Wildlife habitat
- Duck factory



Questions?



Lisa Irby
Director of Operations
NHQ Conservation

