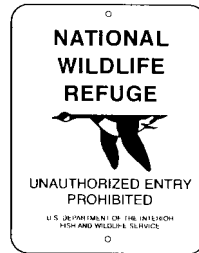


National Wildlife Refuge Activity Guide



Welcome to Your National Wildlife Refuge System

Map of the United States showing National Wildlife Refuges and Wetland Management Districts.



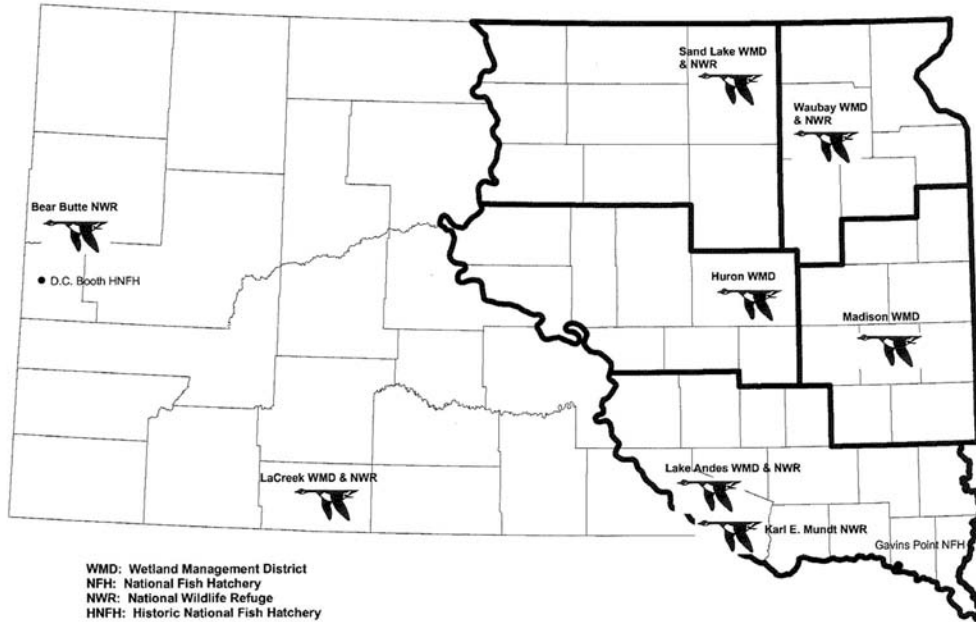
The National Wildlife Refuge System is America's only network of land that was created to protect and conserve wildlife and their habitats. Refuges also provide places for people to explore and enjoy.

With over 550 National Wildlife Refuges and one in every state, wildlife can find a safe home all across the country. The National Wildlife Refuge System protects over 93 million acres of habitat.

Where Am I??

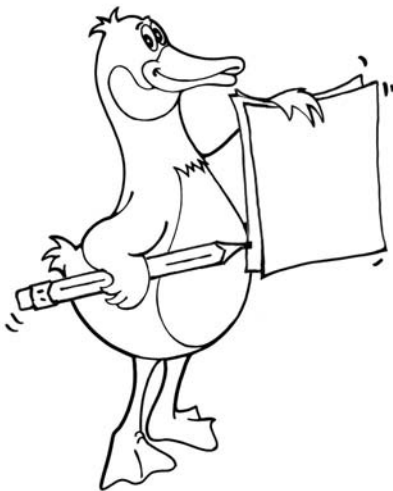
- The first refuge was named Pelican Island and can be found off the coast of Florida.
- Find a refuge that has swamps and alligators.
- At which refuges would you find polar bears?
- At which refuge would ducks and geese spend the winter?
- How many refuges are there in the state you live in?
- Can you find which state has the most refuges?
- At which refuges would you find seals?
- Find a refuge that is in the desert.

South Dakota's National Wildlife Refuges and Wetland Management Districts

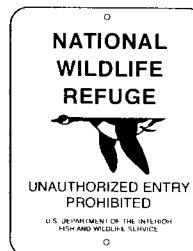


What is a Refuge and Wetland Management District?

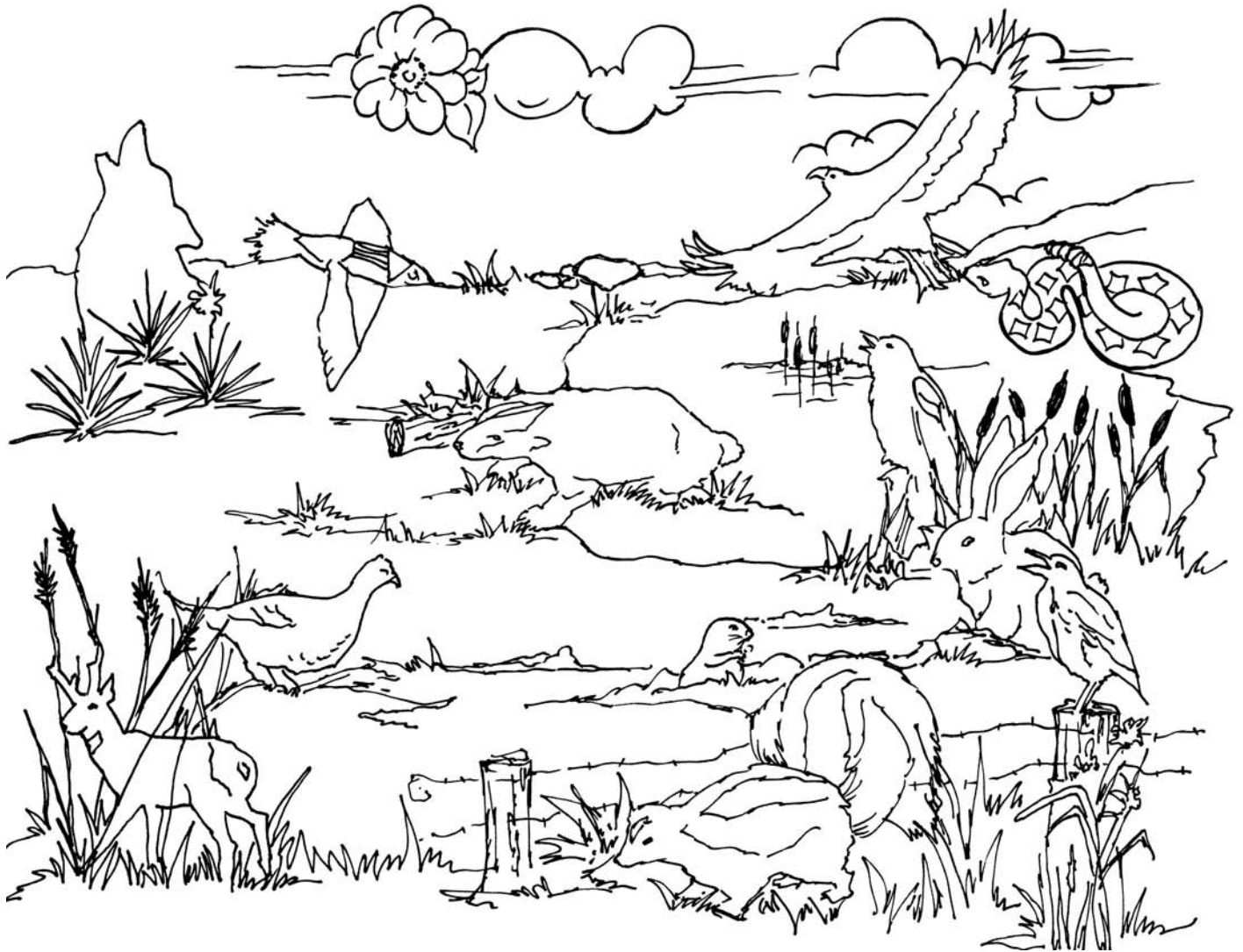
- Wetland Management Districts have many parcels of land called Waterfowl Production Areas
- Waterfowl Production Areas have green and white signs and are open to many kinds of hunting and fishing
- Refuges have blue and white signs and are only open to some hunting and fishing
- Both offer great places to explore and see wildlife
- Both provide homes for migratory birds, mammals, reptiles and amphibians, insects and plants
- North Dakota has the most Refuges and Waterfowl Production Areas in the country
- The USFWS manages more acres of land than the National Park Service



Honker, the Canada goose, is the mascot of the National Wildlife Refuge System. Honker will be your guide through this activity booklet, and show you many exciting things to see and do at a National Wildlife Refuge.



Prairie Habitats



Can You Find These Refuge Friends?...

Meadowlark
Badger
Prairie dog
Rattlesnake
Golden eagle
Jackrabbit
Skunk

Antelope
Prairie rose
Blue grama grass
Coyote
Sharp-tailed grouse
Bobolink

Wetland Habitats

C A N V A S B A C K J M J K Q W
A G P Z K W M I N K D A P S G S
T A O B K A H C W E T L A N D A
T R S M A R T W E E D L O R C L
A T M K C O O T D R Y A E O L A
I E G R E T N L W S M R I C A M
L R M U S K R A T W A D X O G A
A S G H J K D R A G O N F L Y N
Z N O I E P E A Z N M O T W P D
P A O G O R F D R A P O E L M E
T K S U V L O P I N T A I L O R
R E E S W A N N E L O H T O P C

Wetland Words to Find

Canvasback
Cattail
Coot
Dragonfly
Egret
Garter snake

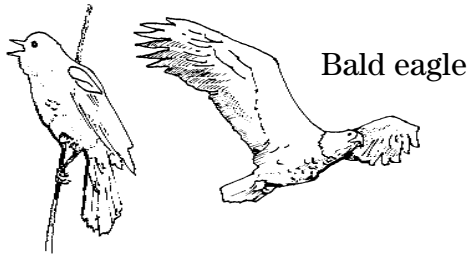
Goose
Heron
Leopard frog
Mallard
Mink
Muskrat

Pintail
Pothole
Salamander
Smartweed
Swan
Wetland



Sand Lake Wetland Management District and National Wildlife Refuge

Help Match the Critters to Their Homes...

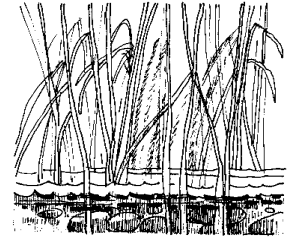


Red-winged blackbird

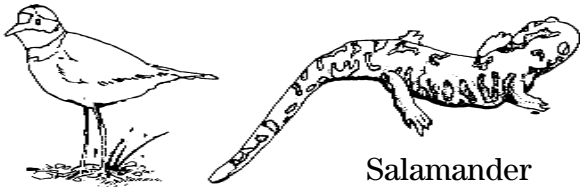
Bald eagle



Sandy shores



Bottom of wetland



Shorebird

Salamander



Floating nest



Hut

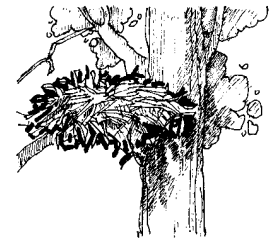


Grebe

Muskrat



Nest in cattails



Nest in cottonwood tree

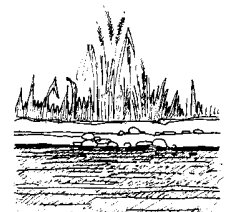


Frog

Aquatic bugs



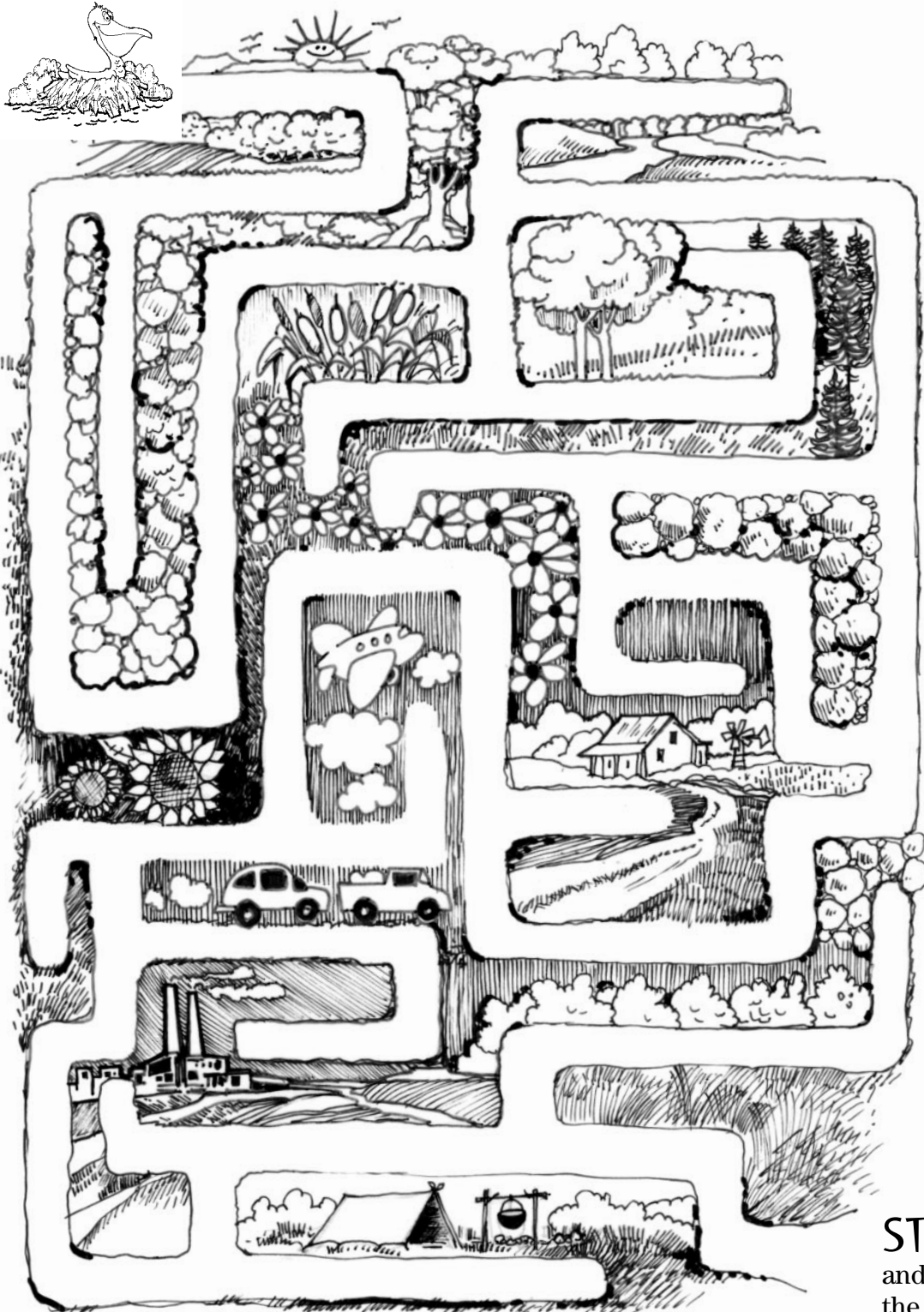
Surface of water



Grass along shore

Refuge Facts:
Sand Lake WMD protects more wildlife habitat than any other district in the Fish and Wildlife Service.
Sand Lake NWR wetlands provide habitat to hundreds of nesting and migrating birds.

LaCreek Wetland Management District and National Wildlife Refuge



Refuge Facts:
LaCreek NWR reintroduced fifty-seven trumpeter swans to its refuge in the 1960's and today the flock numbers over 500.

LaCreek NWR is the only South Dakota NWR with an active nesting Pelican colony.

START HERE
and find your way to
the nesting pelican.

Waubay Wetland Management District & National Wildlife Refuge

Match the bug to its name:

Dragonfly _____

Lady bug _____

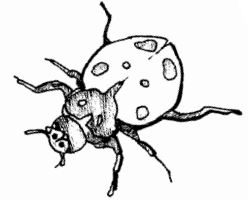
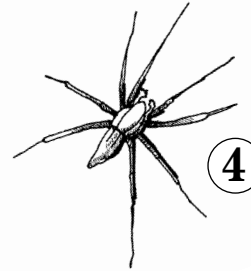
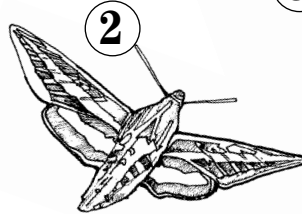
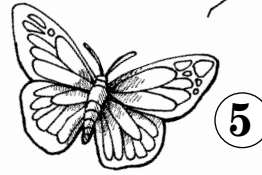
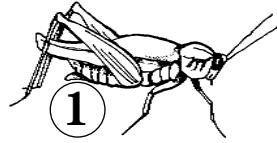
Monarch butterfly _____

Spider _____

Beetle _____

Grasshopper _____

Sphinx moth _____

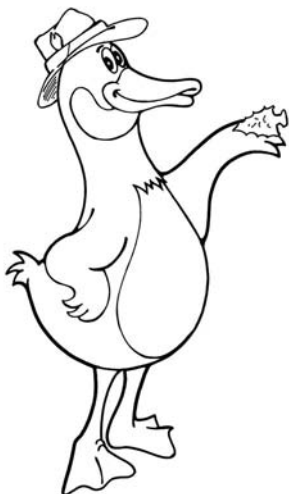


Refuge Facts:

Waubay WMD is home to the Dakota Skipper. It is one of the many types of butterflies that can be found in native prairie at this WMD. “Waubay” comes from a Native American word that means “where wildfowl make their nests.”

Huron Wetland Management District

Native people have lived in South Dakota for hundreds of years. They lived off the plentiful wildlife and plants found here. The tools that they used long ago may be found today... we call them Artifacts. Stone axes, knives, arrowheads, pottery and bone needles may be discovered when exploring. Remember, do not remove any artifacts from a National Wildlife Refuge – they are part of history and must be left for others to discover and enjoy.

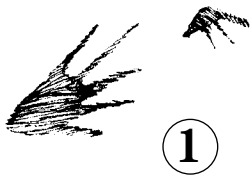


Refuge Facts:

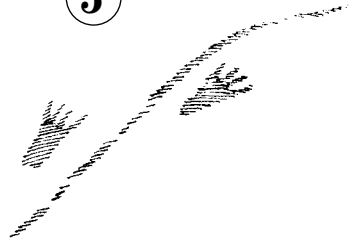
Huron WMD was honored with a Native American blessing by an elder of the Yankton Sioux Tribe of our Maga Ta-Hohpi (Mah-hah-tah-hoppy) WPA. The name means “Duck’s Nest” in the Lakota language.

Huron WMD is home to greater prairie-chickens on our Harter WPA. Each spring these grassland-dependent native grouse perform their extravagant courtship display.

Madison Wetland Management District



5



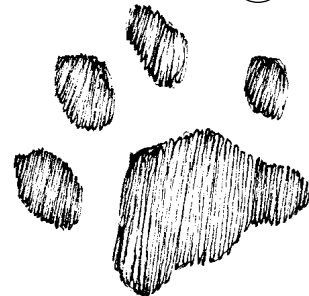
2



6



9



3



7



10



4



8



Can You Identify the "footprints"...

Muskrat _____

Shorebird _____

Goose _____

Grouse _____

Coyote _____

Antelope _____

Mountain lion _____

Bison _____

Frog _____

Badger _____

Refuge Facts:

Madison WMD is located in the tall grass prairie, where grasses grow to six feet tall and red, yellow, white, and blue wildflowers color the landscape.

Madison WMD is home to Silver Lake WPA. This is the area that author Laura Ingalls Wilder grew up and also wrote about in her book titled "*By The Shores Of Silver Lake.*"

Lake Andes Wetland Management District and National Wildlife Refuge

BIRDWATCHING

Bird Identification Tips

Look at...

1. **Size** – compare the bird to something common like smaller than cat, bigger than a deck of cards
2. **Shape** – overall body shape or shape of beak, wings, tail
3. **Color** – look for patches or overall coloration on the body
4. **Markings** – look on the head, wings and tail for spots, stripes or other markings
5. **Habitat** – is it in the water, on the shore, on the ground, in a tree

Refuge Facts:

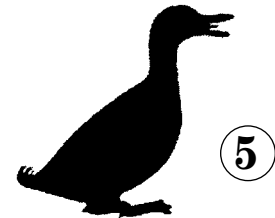
Lake Andes WMD purchased the Karl Mundt Refuge exclusively for bald eagle and has had over 300 eagles during the winter months.

Lake Andes WMR includes Brule County which has the highest Northern Pintail duck pairs/square mile in South Dakota.

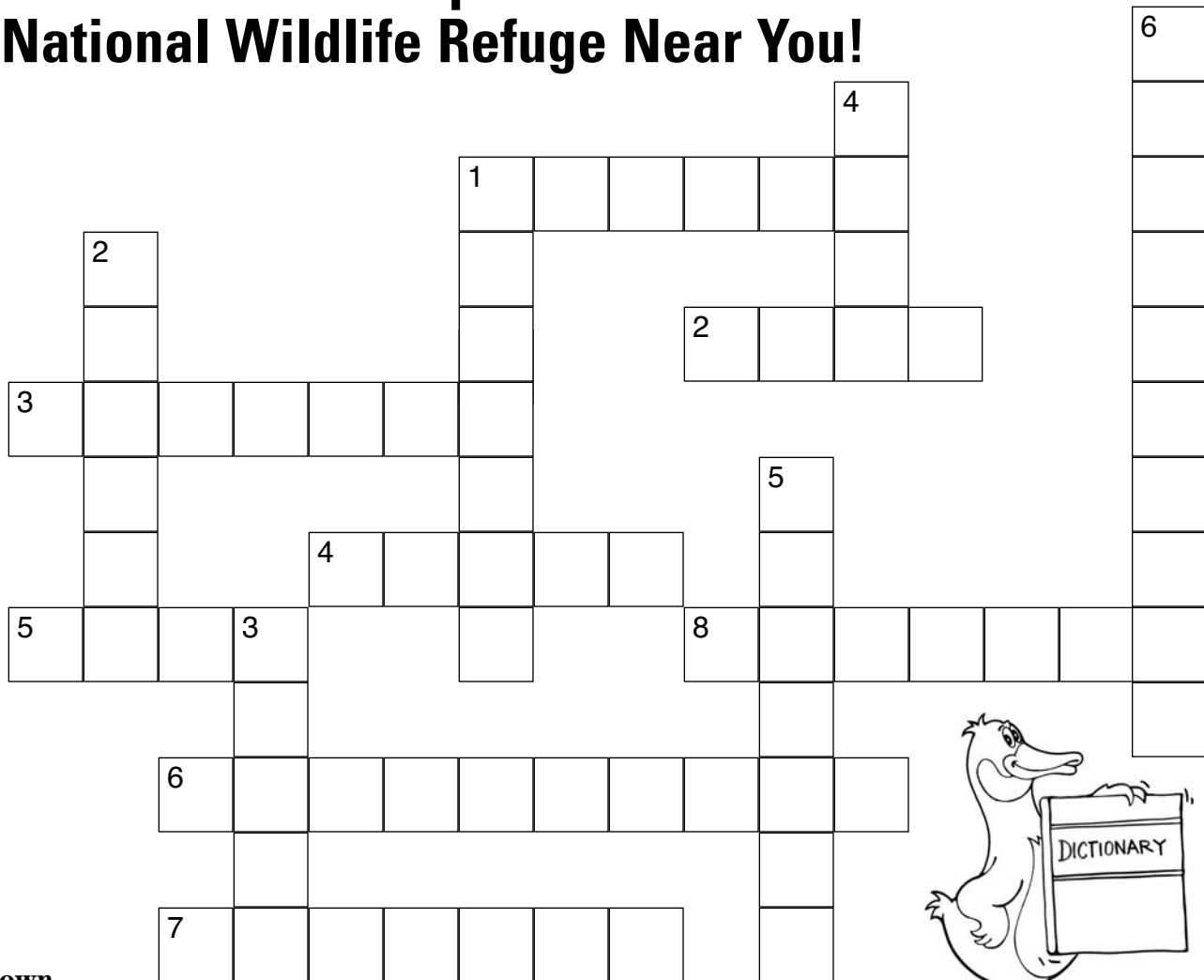


Match the names to the correct silhouette:

- Pelican _____
- Swan _____
- Bald eagle _____
- Woodpecker _____
- Crane _____
- Mallard duck _____



Go Outside and Explore a National Wildlife Refuge Near You!

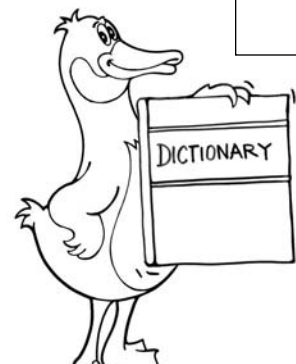


Down

1. I am a very common duck with a green head
2. I am brown, furry, use wood to make dams
3. I am a brown bird with a long black neck and graze on wetland grasses
4. I am a large white bird with a long neck – my babies are called cygnets
5. I am an insect that flies around the wetland eating mosquitos – I don't breathe fire
6. I am black with yellow spots

Across

1. I am a fish and I swim in deeper wetlands
2. I am dark brown, have a long body, and love to eat muskrats
3. I am a plant with a brown top and a favorite food for muskrats
4. I am blue with long legs and bill – I stand on the edge of the water eating frogs and salamanders
5. I am green and hop around the edges of wetlands eating bugs
6. I am a large tree that grows next to water – many birds nest in my strong branches
7. I am a large white bird with a pouch for scooping up fish
8. I am the larva stage of a frog or toad



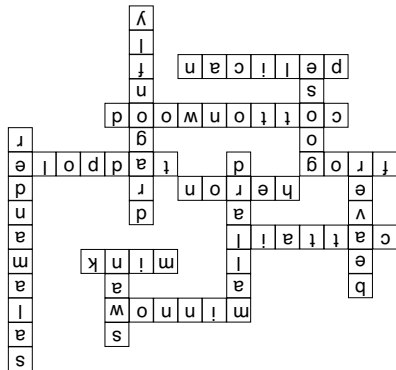
Word Bank

- Pelican
- Goose
- Mallard
- Cottonwood
- Heron
- Dragonfly
- Minnnow
- Mink
- Swan
- Frog
- Beaver
- Cattail
- Tadpole
- Salamander

This activity book was made possible by the following supporters:



CANVASBACKJ MJKW
 A P Z K W M I N K D A P S G S
 T A O B K A H C W E T L A N D A
 T R S M A R T W E E D L O R C L
 A T M K C O O T D R A Y A E O L A
 I E G R E T I L W S M R I C A M
 L R M U S K R A T W A D X O G A
 A S G H J K D R A G O N F L Y N
 Z N O I E P E A Z N M O T W P D
 P A O G O R D R A P O E L M E
 T K S V L O P I N T A I L O R
 R E E S W A N N E L O H T O R C



- Page 8
1. Muskrat
 2. Shorebird
 3. Pheasant
 4. Antelope
 5. Frog
 6. Badger
 7. Bison
 8. Goose
 9. Mountain lion
 10. Coyote

- Page 7
1. Grasshopper
 2. Spinx moth
 3. Dragonfly
 4. Spider
 5. Monarch butterfly
 6. Beetle
 7. Lady bug
- Bald eagle: nest in cottonwood tree
 Red-winged blackbird: nest in cattails
 shorebird: sandy shores
 salamander: bottom of wetland
 grebe: floating nest
 muskrat: hut
 frog: grass along shore
 aquatic bugs: surface of water