



Pacific Region
T/TA CENTER

ANA and the Pacific Insular Area

FPCIA - March 31, 2022

Opening Remarks



Hope MacDonald LoneTree

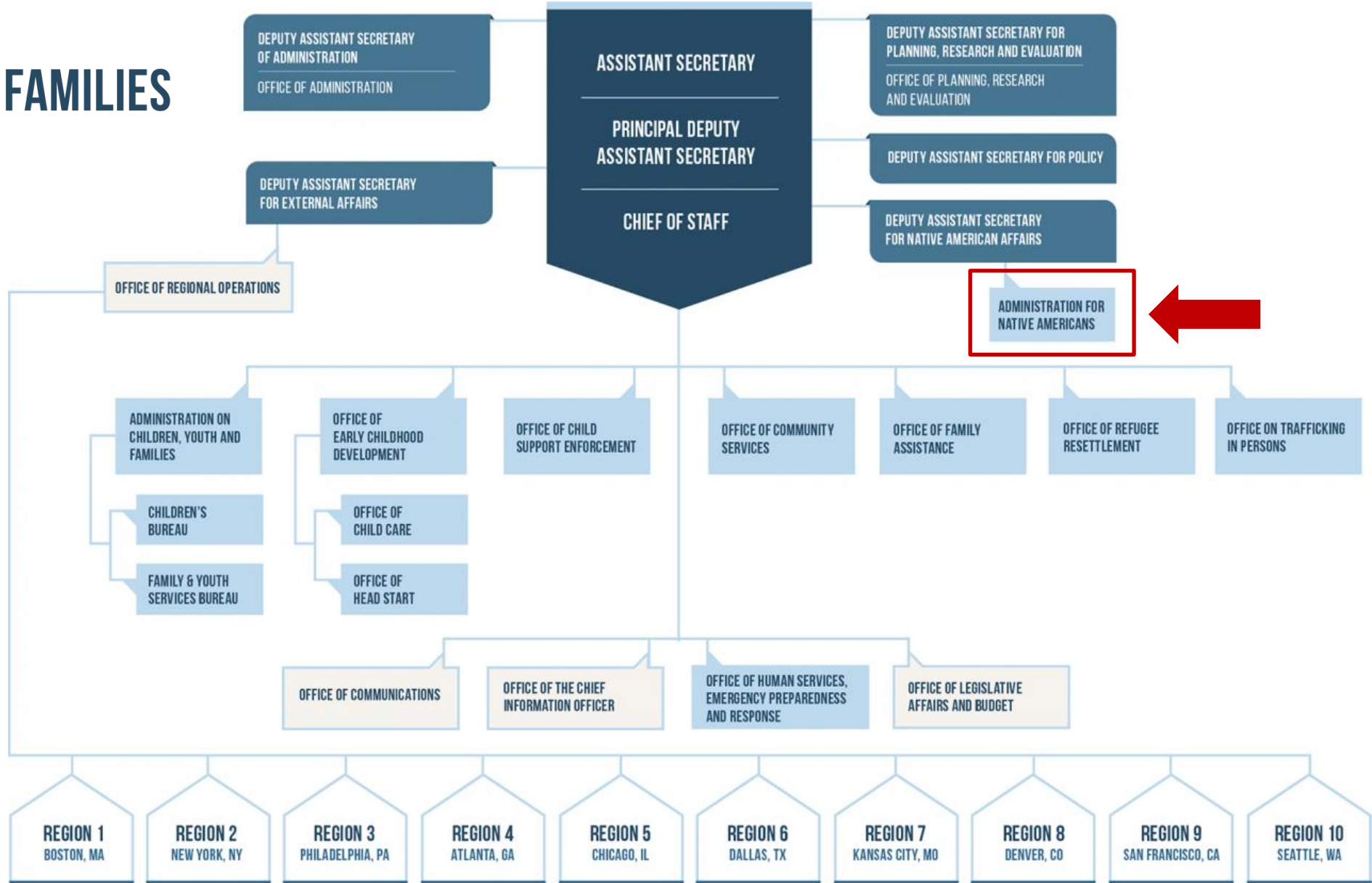
Deputy Commissioner
Administration for Native Americans



History of ANA

- ▶ **In January 1964**, President Lyndon B. Johnson declared the War on Poverty.
- ▶ **Eight months later**, the Economic Opportunity Act was signed into law and the Office of Economic Opportunity (OEO) began awarding grants.
- ▶ **Early in the 1970s**, the Office of Economic Opportunity was terminated, but many of its War on Poverty concepts became the basis for ANA.
- ▶ **Established in 1974** through the Native American Programs Act (NAPA), this new agency also embraced the goal of Native American self-determination.

ADMINISTRATION FOR
CHILDREN & FAMILIES



Mission of ANA



To support Native-led nonprofits and eligible tribes by

- ▶ Promoting self-sufficiency
- ▶ Providing funding for community-based projects
- ▶ Providing free training and technical assistance

ANA's Vision:

All Native communities are thriving!

ANA – Office of the Commissioner



Hope MacDonald LoneTree

Deputy Commissioner

- Intra-Departmental Council for Native American Affairs
- ACF Native Affairs Work Group
- Interagency Working Group on Indian Affairs
- Tribal Law and Order Act Interagency Working Group



Mirtha Beadle Senior Policy Advisor

The Division of Policy is for providing support and guidance to define, establish, and disseminate policy affecting Native American communities.

The responsibilities include:

- Management of a unified and effective policy formulation process
- Formulation of advice on legislative and other activities affecting Native Americans
- Development of strategies to address issues raised in collaboration with Native Americans

ANA – Division of Program Operations (DPO)



Mia Strickland

Director of the Division of Program Operations

The Division of Program Operations (DPO) is responsible for the administration of discretionary grant programs to eligible Tribes and nonprofit Native American organizations.

The responsibilities include:

- Annual grant competitions and coordination of the panel review process
- Development of ANA's Funding Opportunity Announcements; and
- Grant oversight

ANA – Division of Program Evaluation and Planning (PEP)



Amy Zukowski

Director of the Division of Program Evaluation and Planning (PEP)

The Division of Program Evaluation and Planning is responsible for annual evaluation of ANA's grant portfolio.

The responsibilities include:

- Oversight of activities related to ANA program evaluation including development of reports
- Analysis and creation of special organizational studies
- Coordination of training and technical assistance efforts

ANA Pacific Region TTA Center
A Resource of the Administration for Native Americans

TF: 1-844-944-9544
HI: (808) 485-8182

Search

GRANTS ▾ TRAINING ▾ TECHNICAL ASSISTANCE RESOURCES ▾ ABOUT ▾


UPCOMING EVENTS

2020 ANA Virtual PPD Training: October Cohort 1
Tue, Oct 27 - Wed, Oct 28

2020 ANA Virtual PPD Training: October Cohort 2
Tue, Oct 27 - Wed, Oct 28

Aloha! Talofa! Hafa adai!

At the Pacific Region Training & Technical Assistance, we help organizations serving Native communities in the Pacific to develop and to find grant funding for their community-based projects.



LATEST ANNOUNCEMENTS

About the Pacific TTA Center

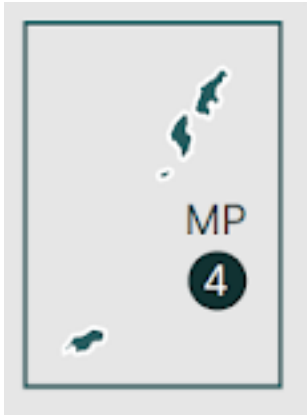
Free training and technical assistance

- ▶ www.anapacific.org
- ▶ 808-485-8182
- ▶ 1-844-944-9544

What you will learn in Project Planning and Development Training	What you will learn in Pre-Application Training
How to use community-based planning processes and tools	Tips on applying in response to an ANA Notice of Funding Opportunity (NOFO)
How to define long-range community goals, document conditions that stand between the community and those goals, and identify assets that can be used to address those conditions	How to complete federal forms and package the application
How to build a project work plan with outcome-based objectives	How to apply through Grants.gov
How to develop a sustainability plan and project budget	How applications for funding are reviewed and scored

Post Award Training is for new ANA grantees only. This training is designed to help you understand the federal requirements related to tracking and reporting your new ANA project.

The Pacific Region



Serving the indigenous peoples of the Pacific

- ▶ Chamorro
- ▶ Carolinian
- ▶ Samoan
- ▶ Tokelauan
- ▶ Native Hawaiian
- ▶ American Indian
- ▶ Alaska Native

ANA in the Pacific



NHRLF

The Native Hawaiian Revolving Loan Fund



Loans.OHA.org

808 594 1888

Low-Interest Loans

for Native Hawaiians

Business - Home Improvement - Debt Consolidation - Education

Assurance of Community Representation - Appendix C of the NOFO

51% of nonprofit board members must represent the community to be served. Categories of representation include:

1. members of federally or state-recognized tribes;
2. ***persons who are recognized by members of the eligible Native American community to be served as having a cultural relationship with that community; or***
3. ***persons considered to be Native American as defined in 45 CFR § 1336.10 and Native American Pacific Islanders as defined in Section 815 of NAPA.***

The second category of community representation requires a cultural relationship defined as lineage, familial, marriage, or other traditional or social connection to the community and not a business or work relationship (e.g. person that owns a business or is employed by an organization that serves the Native community).

ANA Funding Opportunities

CFDA: 93.587

Native Language Preservation & Maintenance (P&M)

- ▶ \$100k – \$300k annually, 1 to 3 years
- ▶ Supports the continued use and vitality of Native languages, including increasing fluency, developing curricula, and teacher certification.

ANA Funding Opportunities

CFDA: 93.587

Native Language Esther Martinez Immersion (EMI)

- ▶ \$100k – \$300k annually, **3 to 5 year projects**
- ▶ Supports the ability of Native Language survival schools and language nests to conduct language immersion instruction.
- ▶ ***Applicants must submit signed document certifying at least three years experience operating language nests or survival schools.***

ANA Funding Opportunities

CFDA: 93.612

Social and Economic Development Strategies (SEDS)

- ▶ \$100k – \$400k annually, 1 to 3 year projects
- ▶ Promotes social wellbeing, perpetuation of culture, and economic self-sufficiency
- ▶ Budget Year: Sept. 30 – Sept. 29
- ▶ Total project funding: \$12,000,000
- ▶ Total projected awards: 48

ANA Funding Opportunities: Other Grants

Pacific Not Eligible:

- ▶ Social and Economic Development Strategies
– Alaska (SEDS-AK)
- ▶ Environmental Regulatory Enhancement (ERE)

Past Grants:

- ▶ Social and Economic Development Strategies
– Growing Organizations (SEDS-GO)
- ▶ Native Youth Initiative for Leadership, Empowerment,
and Development (I-LEAD)

ANA Funding Opportunities for Pacific Applicants

NOFO	<i>SEDS</i>	<i>P&M</i>	<i>EMI</i>
CFDA	93.612	93.587	
Thresholds (per annual budget period)	\$100,000 to \$400,000	\$100,000 to \$300,000	\$100,000 to \$300,000
Allowable Project Periods	12 month 24 month 36 month	12 month 24 month 36 month	12 month 24 month 36 month 48 month 60 month

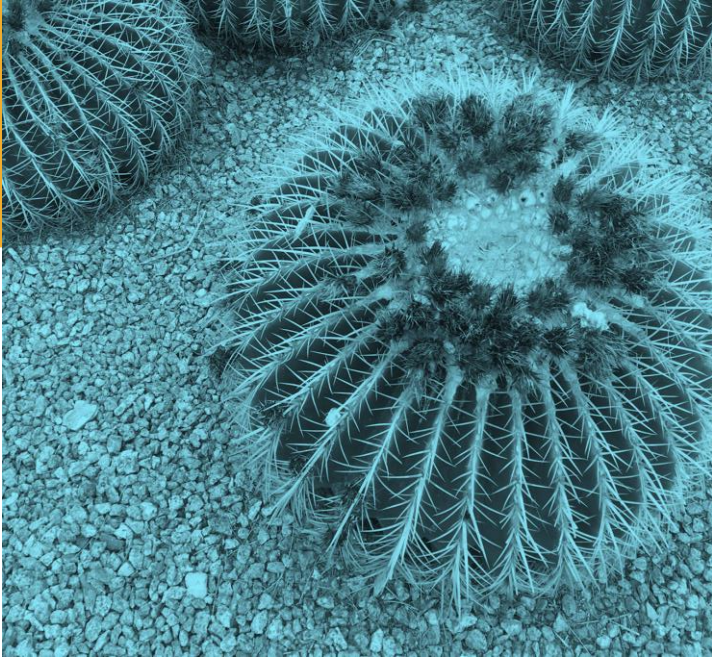
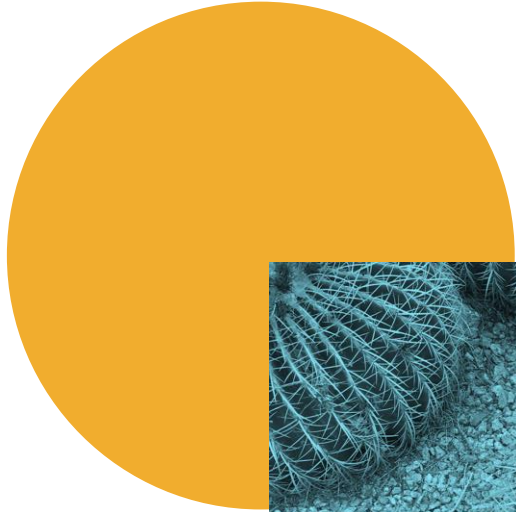


Pacific Region
T/TA CENTER

Connect with Us!

Matthew Kaulana Ing
Director, Pacific Region TTA Center

- ▶ www.anapacific.org
- ▶ 808-485-8182x1
- ▶ matt@kaananiau.com



▶ acf.hhs.gov/ana